



DEALER HANDBOOK

 **Founder's Choice**
CABINETS



OUR MISSION

We strive to be an industry leader in our market by surpassing the competition with customer satisfaction, while providing the best value possible. Our products and service reflect the craftsmanship and quality we would want in our homes.

ABOUT US

Founder's Choice integrates its "in-stock" cabinetry with built to order components to provide end products that are both cost effective and high quality. Our commitment to excellence guarantees high-quality in all the products bearing the Founder's Choice name.

CRAFTSMAN SERIES

Our Craftsman line is an opportunity for us to cater to a myriad of different styles and tastes. Quality, elegance, and style are what we think of when we hear the word Craftsman, it's features will add character to every home.

SELECT SERIES

Featuring the versatile shaker doorstyle, our Select series, has a design synonymous with simplicity and utility. We have built on that tradition with solid wood door faces, a variety of colors and finishes, and other premium features that will complement every home.

CONTENTS

Company Policies	3
Warranty	4
Care & Maintenance	6
Dealer Program	
Dealer Responsibilities	8
Order Process & Policy	9
Order Form Instructions	11
Dealer Display Program	15
Craftsman Series	
Overview	19
Series Options	21
Items List	23
Cabinet Specifications	31
Trim and Molding	61
Custom Cabinets	63
Modifications	64
Select Series	
Overview	65
Series Options	67
Items List	68
Cabinet Specifications	73
Trim and Moldings	90
Modifications	91
Glossary	92
Select vs. Craftsman at a Glance	98

COMPANY POLICIES

ORDERING

We accept order forms via e-mail in the format the order form was created (Microsoft® Excel). Any orders that are not sent in via email using the Microsoft® Excel format may be delayed.

All orders must be filled out in their entirety (please see page 11). Please use proper and correct nomenclature when filling out order forms. Doing so will decrease confusion and ensure efficient customer satisfaction.

Please use multiple order forms for multiple color or style jobs — A separate order form is required for each doorstyle or finish.

CHANGES TO AN ORDER

Changes can be made to an order AT or BEFORE the time of order confirmation. All changes will be followed by an updated order confirmation which you will have to approve. Changes to an order at this point will affect the lead time. Once you have sent a final approval to our order processing department, the order cannot be changed.

CANCELLATIONS

Cancellations can be made to an order AT or BEFORE the time of order confirmation. Once you have approved the order to our order processing department, production cannot be stopped.

RETURNS

Founder's Choice builds to order. We only accept returns with prior approval from the Order Desk on Select cabinets that are in merchantable condition and finished with Select in-stock colors. A restock fee will be charged upon return.

ADDITIONS

Additions can be made to an order, but they may not ship at the same time as the initial order, and will have a new order number.

WILL CALL

Will call hours are **Monday through Friday from 8:00am – 11:30am and 12:00pm – 3:00pm**. We will help you load the products, but we cannot be responsible for securing the product in or on your vehicle. Holiday closures include: New Year's Day, Memorial Day, Independence Day, Labor Day, Thanksgiving Day and Christmas Day.

DELIVERY

We offer delivery within Western Washington with Founder's Choice vehicles. A charge applies to each order based on the mileage radius. Our driver does not leave our facility or load the vehicle until he has contacted the recipient.

SHIPPING

Shipping options are available, cost varies per job and will be quoted on a case-by-case basis.

PACKAGING

We protect all finished sides of our product before it leaves our facility.

LIFETIME LIMITED WARRANTY ON DRAWER GUIDES AND HINGES

Founder's Choice warrants to the original customer (for as long as they own their homes) that the drawer box, drawer guides and hinges used in the manufacturing of Founder's Choice cabinetry products shall be free from defects in material and workmanship under normal use.

THREE YEAR LIMITED WARRANTY ON CABINETS

Founder's Choice warrants to the original customer for a period of three years from the order's invoice date that all components of Founder's Choice cabinetry shall be free from defects in material and workmanship under normal use. These warranties are only applicable to products used in residential applications within the United States and Canada and are not transferable to subsequent owners. Should defects in material or workmanship exist during the applicable warranty period in any Founder's Choice product, Founder's Choice will elect—at its discretion—to either repair or provide a replacement of the defective material or component. This warranty covers only parts and materials of the products supplied by Founder's Choice. Not covered under this warranty are countertops, appliances, plumbing fixtures, labor, removal or reinstall of materials or related components such as fittings.

This warranty shall become void if the cabinets are in any way modified, improperly installed or damaged prior to or during the installation. This also disclaims products utilized in any application other than the standard. Furthermore, this warranty will not apply to cabinets damaged by misuse, neglect, abuse, acts of God, exposure to moisture, exposure to extreme temperatures or the effects of normal wear and tear.

THREE YEAR WARRANTY ON DOORS

Doors are warranted against defective workmanship, warpage, delamination, and twist for a period of THREE years from the order's invoice date. Door(s) may be deemed defective by the manufacturer if it exceeds the following tolerances:

1. A twist or warp of .062" per foot.
2. A length of finished product incorrect by more than .125".

CONDITIONS:

1. Any 5-piece door over 30" in width must receive a mullion, where applicable, to be eligible under this warranty.
2. Any 5-piece door over 48" in height must receive a mullion, where applicable, to be eligible under this warranty.
3. This guarantee only covers doors up to 60" in height.
4. Rustic doors will be covered for defective workmanship only.
5. Solid wood slab doors are in no way covered by this warranty.
6. Warping warranty will be void if product was allowed to fluctuate in temperature by more than 60 degrees.

WOOD STANDARDS

Natural woods may vary in color, characteristics, and exhibit subtle changes as they age. Sunlight, smoke, household cleaners and other environmental conditions may also affect the color match over time. These variations are considered to be the nature of the material in relation to their environmental exposure and are not covered under this warranty. The majority of hardwoods carry Sustainable Forest Initiative certification.

(WARRANTY CONTINUED ON PAGE 5)

WARRANTY

PAINTED FINISHES

Wood, by nature will undergo expansion and contraction movements year after year as it compensates and adjusts to ever-changing atmospheric humidity and temperature conditions. As such, finish stress lines may become visible on painted cabinets, especially at the joints. Any such occurrence is not considered a defect.

NORMAL USE

Normal wear and tear: A form of depreciation assumed to occur even when an item or object is used competently and with care and proper maintenance. It is expected that the normal use will not break the object beyond repair until it has gone through a significant amount of use.

DISCLAIMS

Founder's Choice reserves the right to alter design, specifications, and material without obligation to make similar changes to products previously manufactured. The repair(s) or replacement(s) are contingent upon the current product offerings of styles and construction options within the Founder's Choice product at the time of the warranty claim. If a warranty claim is filed after Founder's Choice products becomes obsolete, Founder's Choice reserves the right to honor the warranty in one of the following fashions:

1. To replace the affected component with a new component of the same type.
2. To replace the affected component and any other component(s) in the residential application to achieve a uniform appearance with a similar and comparable product style of the originally purchased style. If components are replaced, Founder's Choice cannot guarantee that the finish of these replacements will exactly match the finish and appearance of the components in the residential application. This is due to the changes that occur during the wood's natural aging process, affecting its color and grain.

THIS WARRANTY IS THE EXCLUSIVE WARRANTY OF FOUNDER'S CHOICE AND IS IN LIEU OF, ANY FOUNDER'S CHOICE DISCLAIMERS, ALL OTHER WARRANTIES, EXPRESSED OR IMPLIED, INCLUDING THE IMPLIED WARRANTIES OF MERCHANTABILITY AND FITNESS FOR A PARTICULAR PURPOSE.

This warranty gives you specific legal rights and you may have other rights which vary from state to state. Some states do not allow the exclusion or limitation of incidental or consequential damages consequently, the above limitations or exclusions may not apply to you.

To obtain replacement(s) under Founder's Choice's Three Year and Lifetime Limited warranties contact your authorized Founder's Choice Cabinetry dealer or distributor who will arrange for inspection of the cabinet. A dated sales receipt as proof of purchase is required to obtain benefits from this warranty.

IF YOU HAVE DIFFICULTY OBTAINING ASSISTANCE, PLEASE CONTACT:

Founder's Choice Cabinetry
253.475.5544
6002 McKinley Avenue E.
Tacoma, Washington 98404

info@founderschoice.com
founderschoicetacoma.com

WOODEN CABINETRY

Natural woods may vary in color, characteristics, and exhibit subtle changes as they age. Sunlight, smoke, household cleaners and other environmental conditions may also affect the color match over time.

These variations are considered to be natural with regard to the material in relation to their environmental exposure.

FOLLOW THE GUIDELINES BELOW TO ENSURE YOUR CABINET'S LONGEVITY:

1. **DO** wipe down with a damp cloth to remove dust – complete small sections at a time and wipe dry.
2. **DO** use warm soapy water with a soft lint-free cotton cloth, rinse with another wet or soft lint-free cloth, and dry with a third soft lint-free cotton cloth (avoid vigorous rubbing – this tends to raise glossy spots, marring the original effect).
3. **DO** use a damp cloth to clean any spills as they occur.
4. **DO** use warm soapy water to clean door/drawer knobs or pulls, thoroughly dry all hardware joints and surfaces. Buff the hardware with a clean dry cloth.
5. Do **NOT** use a dish cloth to wipe down your cabinet exterior since it may contain remnants of grease or detergents.
6. Do **NOT** use harsh chemicals or detergents, strong soaps, abrasive cleaning products, steel wool, self-polishing waxes, bleach or ammonia-based chemicals, solvents, petroleum, or silicone-based products.
7. Do **NOT** use products containing waxing and polishing compounds, they may build up on the surface of your cabinets and cause a hazy or streaky appearance. This build-up is difficult to remove and should be avoided.
8. Do **NOT** drape damp or wet dish towels over the door of a cabinet, moisture can cause permanent damage to the door over time.
9. Do **NOT** use spray type polishes containing petroleum as they are flammable and toxic.

NOTE: Many brass and silver polishes contain harsh chemicals that can damage the hardware's surface.

HINGES

Lubricate hinges annually for extended life and optimum performance with white lithium spray grease. If hinges loosen over time, tighten screws to restore hinges to their original operating condition.

GLASS DOORS

REQUIRE EXTRA CARE Spray an ammonia-free glass cleaner on a clean, soft, lint-free cloth or paper towel. Do not spray cleaner directly on the glass, it could seep behind the window dividers and cause damage.

WEAR & TEAR AROUND KNOBS AND HANDLES:

Frequent use of cabinet doors and drawers can cause wear around knobs and handles. Chemicals from our skin can break down the finish over time around knobs and handles. Repetitive fingernail and ring impact will damage the finish over time. This is normal "wear & tear" and is not considered a finish defect. Using the care and cleaning instructions outlined above on a routine basis will help to minimize finish wear and will help keep the cabinet finish beautiful for many years.

A touch-up kit should be provided upon delivery of cabinets for occasional scratches, gouges and nicks.



FOUNDER'S CHOICE
DEALER PROGRAM

“The dealer represents the manufacturer.
Both wish to be viewed in a professional manner.”

Founder’s Choice Dealers are held to basic requirements and responsibilities. Please help us start a great working relationship by taking the time to review our mutual expectations. We encourage you to consider having a Founder’s Choice Sales Hutch in your showroom (**see pages 15 and 16**).

THE DEALER WILL...

- Perform the design work for the customer’s space.
- Verify field measurements at the job site.
- Communicate and place orders directly with our order processing department.
- Ensure that orders are filled out as completely and accurately as possible (see order checklist on page 9).
We ask that you use proper and correct nomenclature to avoid confusion.
 1. Hinging, notes, modifications, and accessories are included in the order form.
 2. A floor plan or cabinet layout with notes is required with each Craftsman order (and it is encouraged for Select orders).
 3. We ask that you use proper and correct nomenclature to avoid confusion. See the Glossary on Page 92 for Founder’s Choice terminology.
- Double check the order confirmation.
- Approve order confirmations in writing (email: orders@founderschoice.com, fax, etc.).
- Take initiative to market themselves (home shows, newspaper ads, web, etc.).
- Responsible for payments as your plan permits.

IF APPLICABLE: Prior to or at the time of turning in your first order, we prefer that you send in your Account Registration Form, Credit Application, and a Reseller Permit.

ORDER PROCESS

Below is an outline of the standard order process at Founder's Choice Cabinetry.

1. Dealer fills out the order form with all the required information and sends it to our order processing department in a Microsoft® Excel document.
2. Our order processing department enters the order into our software.
3. Our order processing department sends the Dealer a request for order confirmation via e-mail.
4. The Dealer checks this order confirmation request against their layout and order form.
5. The Dealer sends approval or changes to our order processing department. Without approval and/or payment, the order will not be processed.

AT THIS POINT THE ORDER IS CONSIDERED TO BE FINAL AND IS UNABLE TO BE MODIFIED

6. Following approval to the order confirmation, the parts, pieces, and raw materials are pulled from our warehouse or ordered as needed.
7. Those parts and pieces are then sent to manufacturing, the paint/finish shop, and assembly.
8. Upon completion of your order, the cabinets will be packaged to await delivery, pick-up or shipment.

PLEASE NOTE: We can only accept returns that meet certain conditions. See Returns on page 3 for details.

REQUIREMENTS TO SUBMIT AN ORDER

Before submitting your order request to Founder's Choice, please ensure that you have **signed copies** of each of the following:

- Order form in Microsoft® Excel format
- Layout (if available)
- Custom Quote and any relevant drawings

CABINET DELIVERY POLICIES

Our Cabinet Delivery Policies help us prepare and plan for the delivery of your products. The order form should specify whether the order is for Will Call or Delivery. If the order is for delivery we must have advance notice.

STANDARD DELIVERY INCLUDES:

- First threshold/garage delivery – We can bring our product into your house but not up 3 flights of stairs and down the hall.
- Some orders will be delivered by two Founder's Choice employees and incur an extra charge, however other orders will be able to be handled by one employee.
- Please reference the **Modifications and Fees** tab of the Order Form for delivery charges.

DELIVERY DETAILS:

If any of the following options apply, include that note at the time of order.

- 1st floor home delivery
- 2nd floor home delivery
- Outside/inside stairs
- Non-accessible driveway
- Additional delivery person needed
- Elevator delivery
- Contact info for the site
- Code/pass for entrance
- Call prior to delivery

ORDER FORM

CUSTOMER INFORMATION

This section contains all the information we need to make sure the order is processed, delivered and billed correctly. It is important to have the order form filled out as completely and accurately as possible to avoid confusion. Once you have placed your first order, you may use your customer number instead of typing out your billing information. The order form will automatically adjust the available fields based on your ship to method. The **PO/Job Name** gives both of us something to reference, especially if you frequently purchase products from Founder's Choice and potentially have more than one open order in at a time.

TAX

In order to ensure accurate quoting, verify your tax rate. Search <http://dor.wa.gov> to verify the sales tax amount for the delivery address (in WA state). Please note that any will call order is a 10.1% sales tax rate. To process an order with no tax, type either "RESELLER" or "OUT OF STATE" in place of a tax rate.

DELIVERY AND SHIPPING

Please provide us with accurate information so we can plan your order effectively. Delivery cost can be found in the accessories tab at the bottom of the screen, however, we will quote the cost of shipping on a per-job basis.

REQUESTED DELIVERY DATE

Let us know what works best for you and we will try our best to be there. Always check the estimated delivery date on your final order confirmation, the timeline may change if the order confirmation process exceeds 24 hours.

FACTOR

The factor can be found in the space to the right of the order specifications. If you are unclear on what your factor is, please contact our order desk.

SPECIES

Different wood species will 'take' stain in different ways due to the natural characteristics of the wood, choose one of your preferences. Please choose the 'PG Maple' option for all painted Craftsman orders, please choose the White Birch option for all Select orders.

DOORSTYLE

Please refer to your Founder's Choice sales hutch, see page 21 of this Dealer Handbook, or the Founder's Choice brochure for doorstyle details. For custom doorstyles, please call our engineering department to discuss available profiles.

CUT FOR GLASS

If you would like to modify a cabinet for Cut for Glass or Mullions, select the cell to the right of the quantity cell and use the drop-down menu to select your desired option – the price will automatically change. Please refer to the '**Instructions**' tab of the order form for style definitions.

DRAWER HEAD

Drawer heads are available in 5-piece and slab. 5-piece drawer heads show the full doorstyle and slab drawer heads only shows the outer facing edge detail of the doorstyle. 5-piece drawer heads are cope and run construction and slab drawer heads are made of multiple hardwood staves on all styles except for the Bridgeport doorstyle.

COLOR

The standard Founder's Choice colors are listed and available on the order form. 'Catalog' colors refer to any color in the Rudd or Sherwin-Williams color fan deck. 'Match' color options are exactly what they sounds like, we'll match your sample!

Please call the Order Desk if you have any questions about specifying the name of your Catalog or Match colors.

FINISHED INTERIOR

This option provides a color or species matched interior. For 'color matched interior' orders, the species will be White Birch.

ITEM LIST

The cabinet code references the item code or nomenclature from the items tab. Enter one cabinet code per line (Note: The order form is not case-sensitive). Any amount is acceptable in the quantity column, but if you've got something outrageous in there, we're going to ask questions before processing.

NOTES

The 'Notes' column is your opportunity to include notes such as hinging or where accessories might be installed (roll-out shelves, recycle centers, etc.)

PRICES

The price columns should automatically fill in. If they don't, you should re-address the cabinet code input or quantity.

CUSTOM PRICE

The accessory price column is where you enter any additional costs for things like custom pricing. It is important you only enter numbers here, no lettering or notes. The accessory costs are totaled and added to the rest of the order at the bottom.

TOUCH-UP KIT

At the top of the order form, a touch up kit is always included, and is locked in. Should you decide that you do not need a touch up kit, you may delete the quantity of the touch up kit.

ADDITIONAL TABS

ACCESSORIES This tab lines out any accessories that can be added to your order and includes pricing for each accessory. Record the accessory name just like an item code. Please place the name of the accessory item in the notes field of the item that is to contain the accessory.


MODIFICATIONS AND FEES This tab contains all of the potential modifications that Founder's Choice offers. Please note that Founder's Choice reserves the right to correct improperly recorded modifications or fees.

ITEMS Simply, this is a tab with cabinet nomenclature of every cabinet offered. It is ordered alphabetically, beginning with numbers first. This would be the first place to look to see if we make a cabinet you are unsure about.

JOB OPTIONS This tab displays all of the price modifications that the order form automatically calculates.

ORDER FORM SAMPLE

Thank you for providing complete order information.

	Customer Name <u>ABC Company</u> Contact Name <u>John Doe</u> Customer PO <u>Kitchen</u> Telephone <u>(253) 555-3815</u> Email <u>abccompany@gmail.com</u>	Quote Date <u>1/1/2018</u> Sales Rep _____ Customer No. _____ Requested _____ Delivery Date _____
	Dealer Order Form: Check Updated Order Form	

Bill to Name <u>ABC Company</u> Address <u>1234 Main Street</u> City <u>City</u> State <u>State</u> Zip <u>98404</u>	Ship to Method <div>Delivery by Founder's Choice</div> <input type="checkbox"/> Same as Bill To Address	Ship to Name <u>John Doe</u> Address <u>4321 Minor Street</u> City <u>City</u> State <u>State</u> Zip <u>98404</u>
Total Tax Rate <u>10.1%</u>	Delivery Cost \$ <u>150.00</u>	Extra Delivery Driver \$ <u>75.00</u>

Factor

0.8

Order Specifications

Species: <u>White Birch</u>	Color: <u>Cappuccino</u>
Drawer Head: <u>5 Piece</u>	
Custom Finish: <u>None</u>	Door Style: <u>Select Shaker</u>

Craftsman Order: Lead Time After Approved Order Approximately: 6-8 Weeks

Cabinet Code	Count	Cut for Glass- Clear? Divided? Framed?	Dual Tone and Finished Interior?	Drawings?	Order Type	Applied Skins?	NOTES	Cabinet Price	Total	Custom Price
TOUCH UP	1				SEL			14.40	14.40	
W2436	1	CFG-Divided	CMI		CR	Both		834.93	834.93	
Wskin36	2				SEL		W2436	34.56	69.12	
W2436	1	CFG-Divided	CMI		CR	Left		819.93	819.93	
Wskin36	1				SEL		W2436	34.56	34.56	
CUSTOM-CABINET	1			Yes	CR		QUOTE 00123 - WR1520			543.21
WOS0636	2				SEL			127.68	255.36	
RW3612	1				SEL			248.64	248.64	
UC1890	1				SEL	HL		788.16	788.16	
W2436	1				SEL			343.68	343.68	
WEZR2436	1				SEL			502.08	502.08	
B15	1				SEL	Left	HR	305.88	305.88	
BSKIN	1				SEL		B15	52.80	52.80	
SB36	1				SEL		MOD to Single Drawer	456.00	456.00	
MOD-SINGLE DOUBLE DRAWER	1				CR		Single Drawer Face B36	75.00	75.00	
3DB33	1				CR			1,313.65	1,313.65	
B21	1				CR	HL		494.30	494.30	
B21	1				SEL	Right	HR, Cutlery Drawer, 2 ROS21	368.28	368.28	
BSKIN	1				SEL		B21	52.80	52.80	
NESTED CUTLERY DRAWER 21	1				SEL		B21	230.00	230.00	
ROS21	1				SEL		B21	61.60	61.60	
F0330	1				SEL			24.00	24.00	
MOC90	1				SEL			56.64	56.64	
SCRIBE	4				SEL			39.36	157.44	
TOESKIN	4				SEL			28.80	115.20	
CROWNS	4				SEL			207.36	829.44	
CRBACKER1.5	4				SEL			8.00	32.00	
FP2496	1				SEL			228.48	228.48	

Override Item with
Craftsman Price

Craftsman Pricing

Product Cost:	\$ 8,764.37
Total Custom Price:	\$ 543.21
Delivery:	\$ 225.00
Subtotal:	\$ 9,532.58
Tax:	\$ 962.79
Total:	\$ 10,495.37
Less Deposit:	
Total (Less Deposit):	\$ 10,495.37

Customer Approval: _____

Customer Approval Date: _____

*All Sales Final, Quote is good for 30 days from printed date

**Once this document is signed, changes will no longer be accepted.

ALL add-ons will need to be on a separate order and will generate a new lead time.

Revision Date: 3.8.2018 FC FORM 10.8

Custom Cabinet Request

Date:	1.1.2018	
Sales Rep:		
Customer Name:	Dealer Name	
Job Name:	Smith Pantry	
Engineering Only		
Quote #	Quote 0314	
Price #	See Below	
Job Options:/Cabinet Details:		
Factor:	0.5	
Species:	White Birch ▼	
Doorstyle:	Select Shaker ▼	Please Replace if Custom Door
Drawer Head:	Slab ▼	
Color:	Amber ▼	
Glaze:	None ▼	
Other Notes: (What is the customer trying to accomplish)		
	W2442 - 1 door cut for glass with finished interior	
	**Please use W2442 MOD-SINGLE DOUBLE DOOR	
	W4842 - doors cut for glass with finished interior	
	**Cab too large. Use 2xW2442 MOD-SINGLE DOUBLE DOOR	
	custom 24" base wine cabinet with 4 rows of cubes - 954.03	
	custom 4db36 16" deep - 1272.91 **This will have 12 inch drawer depth**	

CRAFTSMAN DOORS

	DOORSTYLE	SPECIES	FINISH
RAISED PANEL	Regent	PG Maple	Biscuit
	McCormick	Red Oak	Ash
	Ruston	Alder	Amber
	Grandview	Rustic Alder	Natural
	Grandview	Rustic Beech	Natural
	Grandview	Rustic Cherry	Natural
BEADED PANEL	Orchard	PG Maple	Cranberry
RECESSED PANEL	Lexington	PG Maple	Cappuccino
	Old Town	Cherry	Merlot
	Whitman	Beech	Java
	Pioneer	Beech	Mocha
	Union	PG Maple	Linen
	Pacific	PG Maple	Pearl
	Proctor	Maple	Chestnut
SLAB	Bridgeport	Birch	Espresso

SELECT DOORS

	DOORSTYLE	SPECIES	FINISH
RECESSED PANEL	Shaker	Birch	Mocha
	Shaker	Birch	Wheat
	Shaker	Birch	Pearl
	Shaker	Birch	Slate

FOUNDER'S CHOICE SALES HUTCH

HUTCH

The upper hutch is our Espresso finish on Birch wood and the backing is painted MDF in Slate. Rail mounting provides space to mount the supplied door samples (in every color). The solid hardwood doors swing for easy viewing and can be removed if needed.

- Stain/Paint chips, brochures, and offered literature will be supplied for storage in the drawers.
- Trim and crown molding samples will also be supplied for storage in drawers.

CABINETS

The all plywood, I-Beam construction make our cabinets some of the strongest available (and they are also CARB phase 2 compliant). They are accompanied by full-extension, hardwood dovetailed drawers. Additionally, soft-close drawer guides and 6-way adjustable soft-close hinges are standard throughout Founder's Choice Cabinetry. In addition to having a strong structure we also build with materials that are CARB phase 2 compliant. By being CARB phase 2 compliant we are ensuring that we are adhering to one of the most stringent regulations in effect which limits the emissions from composite wood products.

DOORS

All our doors are hardwood, cope-and-run construction. There is plenty of space to display the doorstyles we offer in multiple ways. The upper level shelf gives enough space to showcase three to four additional doorstyles (preferably the rustic offerings). Care was taken to ensure that all our doorstyles, finishes and species could be displayed.

Any door may be ordered in any combination. Each door sample should be properly labeled with Doorstyle, Species, and Color or Finish for ease of reference.



LEFT CABINET - B18

Slab drawer face and Pioneer door in Beech with an Ash stain.

- ROS18 installed btm
- FEL
- HL

CENTER CABINET - 3DB27

Pioneer doors in Beech with an Ash stain.

- 5-piece df

RIGHT CABINET - B18

Slab drawer face and Pioneer door in Beech with an Ash stain.

- FER
- HR

DEALER DISPLAY PROGRAM

WE OFFER THE RIGHT TOOLS TO MAKE SURE THE JOB IS **DONE RIGHT!**

Founder's Choice has created a variety of sales tools to help facilitate better communication between the client and the sales representative. From physical samples to high-quality, full color, detailed brochures, Founder's Choice has the options clearly explained.



SKUs

SAMPLES

• CROWN RING	Crown sample	\$10
• SAMPLE DOOR	Custom sample door	\$50
• SELECT DOOR SET	Select Series doors with travel bag Includes 1 bag and 5 doors	\$250
• CRAFTSMAN DOOR SET	Craftsman Series doors with travel bag Includes 2 bags and 14 doors	\$1000
• SAMPLE CHIPS 4 X 6	Single color sample chip Includes 1 color ship in birch	\$1 each
• SAMPLE CHIPS 4 X 6 SET	Set of color sample chips Includes 70 color chips in birch (5 of each colorway)	\$50

CUSTOM SAMPLE DOORS

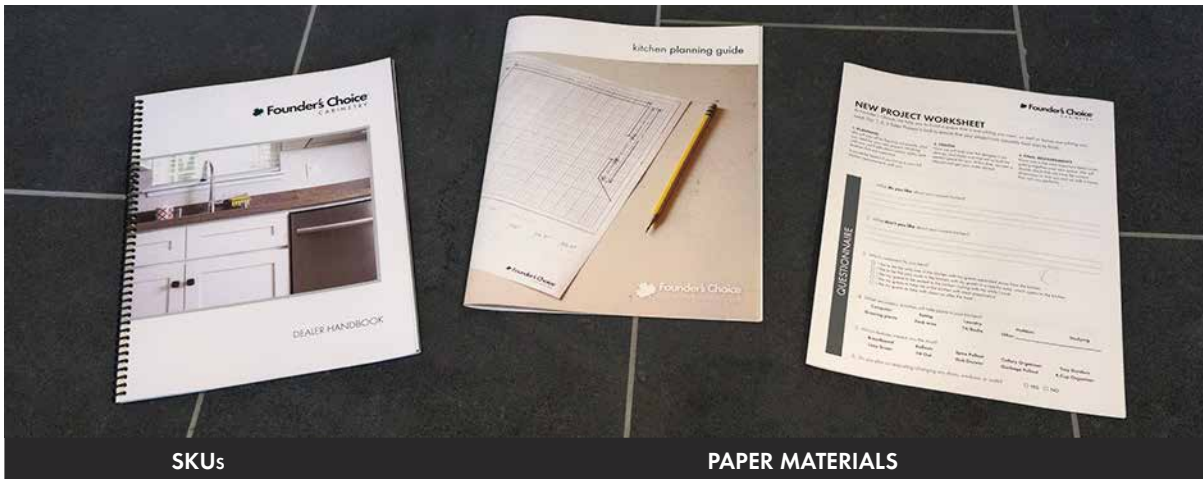
When ordering a custom door or color, the customer must place a deposit (minimum \$50*), approve a sample, and sign for approval. Samples should be ready in 10 working days or less.

The deposit will be applied towards the order total upon purchase. Customer must sign off before a sample is ordered **and again** before the complete order is processed.**

*Deposits are non-refundable and will only apply to the job directly correlating to the sample.

** If the customer places a 50% deposit, signs the completed order form (which includes all accessories), and color is the **ONLY** detail left to be determined, then we will process the order before the sample approval (this will drastically reduce timeline).

DEALER DISPLAY PROGRAM



SKUs

PAPER MATERIALS

• KITCHEN PLANNING GUIDE	Kitchen Planning Guide	\$2.50 each
• NEW PROJECT WORKSHEET	New Project Worksheet (set of 50)	\$5 per set
• DEALER BOOK	Additional Dealer Handbook	\$25 per book



SKUs

DISPLAY MATERIALS

• FCC SALES CENTER	Founder's Choice Sales Hutch	\$2,495
• KNOB PULL-V1	Hardware Display Board	\$50
	Showroom Cabinet Displays	Factor is .28
	Cabinet displays are subject to pre and post approval by FC	
• VANITY POSTER BOARD	Vanity Poster Board	\$25
• WINDOW CLINGS	Authorized Dealer Window Cling	\$5
• DEALER PLACARD	Authorized Dealer Placard	\$20
	One included at no extra charge with the purchase of a Sales Hutch.	



FOUNDER'S CHOICE

CRAFTSMAN SERIES

“The Craftsman Series is a semi-custom cabinet line, built in our Tacoma, WA facility.”

Every job in our Craftsman line is made to order so you are able to choose any wood species, doorstyle, stain or paint color that we carry. We also offer custom options such as extended stiles, glass-paneled doors and custom sizes. We take pride in the high level of thought and design put into our cabinets and are excited to see what you can create using our Craftsman Series cabinets!

KEY THEMES

- Solid hardwood doors and face frames
- Dovetailed solid wood drawer boxes
- $\frac{1}{2}$ " CARB P2 rated plywood
- $\frac{1}{2}$ " plywood back
- $\frac{3}{4}$ " horizontal reveal
- $\frac{1}{2}$ " vertical reveal
- Full-extension soft-close drawer guides
- $1\frac{1}{2}$ " increments from 9" up to 27" wide in most wall and base cabinets
- All shelves are full depth, edge-banded, and $\frac{3}{4}$ " thick plywood
- Conversion varnish
- Dadoed, nailed, & glued
- Standard interior is UV-finished White Birch plywood
- Exposed ends must be covered with skins
- Cabinets that don't come with a shelf, are not expected to be drilled for shelf holes but they may be present

6-WAY ADJUSTABLE SOFT-CLOSE HINGES



FULL EXTENSION SOFT-CLOSE GUIDES



CRAFTSMAN SERIES OPTIONS



PIONEER



Pioneer Door Profile



ORCHARD



Orchard Door Profile



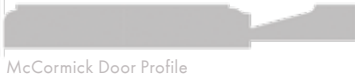
PACIFIC



Pacific Door Profile



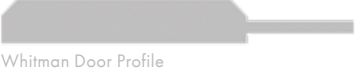
MCCORMICK



McCormick Door Profile



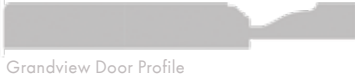
WHITMAN



Whitman Door Profile



GRANDVIEW



Grandview Door Profile



UNION



Union Door Profile



RUSTON



Ruston Door Profile



OLD TOWN



Old Town Door Profile



REGENT



Regent Door Profile



LEXINGTON



Lexington Door Profile



PROCTOR



Proctor Door Profile



BRIDGEPORT



Bridgeport Door Profile

WOOD SPECIES



COLOR SELECTION



ITEMS LIST

BASE CABINETS

[illegible]

WALL CABINETS

12" Wall		18" Wall		24" Wall		30" Wall	
1 Door	W1212	1 Door	W1218	1 Door	W1224	1 Door	W0930
	W13.512		W13.518		W13.524		W1230
	W1512		W1518		W1524		W13.530
	W16.512		W16.518		W16.524		W1530
	W1812		W1818		W1824		W16.530
	W19.512		W19.518		W19.524		W1830
	W2112		W2118		W2124		W19.530
	W22.512		W22.518		W22.524		W2130
		2 Doors	W2418	2 Doors	W2424	2 Doors	W22.530
			W25.518		W25.524		W2430
			W2718		W2724		W25.530
			W3018		W3024		W2730
			W3318		W3324		W3030
			W3618		W3624		W3330
			W3918				W3630
15" Wall		21" Wall		27" Wall		36" Wall	
1 Door	W1215	1 Door	W1221	1 Door	W1227	1 Door	W0936
	W13.515		W13.521		W13.527		W1236
	W1515		W1521		W1527		W13.536
	W16.515		W16.521		W16.527		W1536
	W1815		W1821		W1827		W16.536
	W19.515		W19.521		W19.527		W1836
	W2115		W2121		W2127		W19.536
	W22.515		W22.521		W22.527		W2136
2 Doors	W2415	2 Doors	W2421	2 Doors	W2427	2 Doors	W22.536
	W25.515		W25.521		W25.527		W2436
	W2715		W2721		W2727		W25.536
	W3015		W3021		W3027		W2736
	W3315		W3321		W3327		W3036
	W3615		W3621		W3627		W3336
	W3915						W3636
							W3936

ITEMS LIST

WALL CABINETS (CONT.)

42" Wall

1 Door	W0942
	W1242
	W13.542
	W1542
	W16.542
	W1842
	W19.542
	W2142
2 Doors	W22.542
	W2442
	W25.542
	W2742
	W3042
	W3342
	W3642
	W3942

Blind Corner Wall

Blind Left	BCW3630L
	BCW3636L
	BCW3642L
Blind Right	BCW3630R
	BCW3636R
	BCW3642R

Corner Wall

Diagonal	DCW2430
	DCW2436
	DCW2442
	DCW2736
	DCW2742
Easy Reach	WEZR2430
	WEZR2436
	WEZR2442

Microwave Wall

Shelf Only	MWS3018
2 Doors Above Shelf	MWS3030
	MWS3036
	MWS3042

Mirror Wall

Mirror	MIR2430
	MIR3030

Wall Open Shelf

Open Shelves	WOS0630
	WOS0636
	WOS0642

Plate Rack

Shelf Only	PR3015
2 Doors Above Shelf	PR3030
	PR3036
	PR3042

Wine Rack Wall

Shelf Only	WR1530
	WR3015
2 Doors Above Rack	WR3030
	WR3036
	WR3042

Refrigerator Wall

30"	RW3012
	RW3015
	RW3018
	RW3021
33"	RW3024
	RW3312
	RW3315
36"	RW3318
	RW3612
	RW3615
39"	RW3618
	RW3621
	RW3624
	RW3912
	RW3915
	RW3918
	RW3921
	RW3924

TALL CABINETS

Linen Cabinet

2 Doors	LC1884
	LC1890
	LC1896
4 Doors	LC2484
	LC2490
	LC2496

Custom Oven Cabinet

2 Doors + 1 Drawer	OC3084
	OC3090
	OC3096
	OC3384
	OC3390
	OC3396

Utility Cabinet

2 Doors	UC1584
	UC1590
	UC1596
	UC1884
	UC1890
4 Doors	UC1896
	UC2484
	UC2490
	UC2496
	UC3084
	UC3090
	UC3096

VANITIES

Vanity Base		Vanity Base - Tall Full Height		3 Drawer Vanity Base - Tall		Vanity Sink Base - Tall Full Height	
1 Door + 1 Drawer	VB12	1 Door	FHVB12T	3 Drawers	3DVB12T	1 Door	FHVS18T
	VB13.5		FHVB13.5T		3DVB13.5T		FHVS19.5T
	VB15		FHVB15T		3DVB15T		FHVS21T
	VB16.5		FHVB16.5T		3DVB16.5T		FHVS22.5T
	VB18		FHVB18T		3DVB18T	2 Doors	FHVS24T
	VB19.5		FHVB19.5T		3DVB19.5T		FHVS25.5T
	VB21		FHVB21T		3DVB21T		FHVS27T
	VB22.5		FHVB22.5T		3DVB22.5T		FHVS30T
2 Doors + 1 Drawer	VB24	2 Doors	FHVB24T		3DVB24T	FHVS33T	
	VB25.5		FHVB25.5T		3DVB25.5T	FHVS36T	
	VB27		FHVB27T		3DVB27T	FHVS39T	
	VB30		FHVB30T		3DVB30T		
	VB33		FHVB33T				
	VB36		FHVB36T				
			FHVB39T				
Vanity Base - Tall		Combo Units		Vanity Sink Base		Vanity Wall	
1 Door + 1 Drawer	VB12T	2 Doors + 2 Small Drawers + 1 False Drawer	2DVS18	1 Door + 1 False Drawer	VS18	1 Door with Open Shelf	VW1830
	VB13.5T		2DVS19.5		VS19.5		VW1836
	VB15T		2DVS21		VS21		VW2130
	VB16.5T		2DVS22.5		VS22.5		VW2136
	VB18T			2 Doors + 1 False Drawer	VS24	Vanity Assembly	VA30-DL
	VB19.5T				VS25.5		VA30-DR
	VB21T				VS27		VA36-DL
VB22.5T			VS30	VA36-DR			
2 Doors + 1 Drawer	VB24T	3 Drawers	3DVB12			2 Doors & 6 Drawers	VA48
	VB25.5T		3DVB13.5				VA60
	VB27T		3DVB15			4 Doors & 3 Drawers	VA60DD
	VB30T		3DVB16.5				
	VB33T		3DVB18				
	VB36T		3DVB19.5				
	VB39T		3DVB21				
			3DVB22.5				
	3DVB24						
	3DVB25.5						
	3DVB27						
	3DVB30						
Vanity Knee Drawers		3 Drawer Vanity Base		Vanity Sink Base - Tall			
21" Depth	VKD24		3DVB24	1 Door + 1 False Drawer	VS18T		
	VKD27		3DVB25.5		VS19.5T		
	VKD30		3DVB27		VS21T		
	VKD33		3DVB30		VS22.5T		
	VKD36			2 Doors + 1 False Drawer	VS24T		
					VS25.5T		
					VS27T		
					VS30T		
					VS33T		
					VS36T		
					VS39T		

ITEMS LIST

SHELVING

Shelf - Base

Extra Shelving
for Base
Cabinets

B09-SHELF
B10.5-SHELF
B12-SHELF
B13.5-SHELF
B15-SHELF
B16.5-SHELF
B18-SHELF
B19.5-SHELF
B21-SHELF
B22.5-SHELF
B24-SHELF
B25.5-SHELF
B27-SHELF
B30-SHELF
B33-SHELF
B36-SHELF
B39-SHELF
BSHELF

Shelf - Vanity Base

Extra Shelving
for Vanity Base
Cabinets

VB10.5-SHELF
VB12-SHELF
VB13.5-SHELF
VB15-SHELF
VB16.5-SHELF
VB18-SHELF
VB19.5-SHELF
VB21-SHELF
VB22.5-SHELF
VB24-SHELF
VB25.5-SHELF
VB27-SHELF
VB30-SHELF
VB33-SHELF
VB36-SHELF
VBSHELF

Shelf - Roll Out

Extra Roll Out
Shelving

ROS15
ROS18
ROS21
ROS24
ROS27
ROS30
ROS33
ROS36
ROS39

Shelf - Wall

Extra Shelving
for Wall
Cabinets

W9-SHELF
W10.5-SHELF
W12-SHELF
W13.5-SHELF
W15-SHELF
W16.5-SHELF
W18-SHELF
W19.5-SHELF
W21-SHELF
W22.5-SHELF
W24-SHELF
W25.5-SHELF
W27-SHELF
W30-SHELF
W33-SHELF
W36-SHELF
WSHELF

OFFICES

Filing Cabinet

2 Drawers | 2DFC18
2DFC21
2DFC40
3 Drawers | 3DFC18

Full Height Desk Filing Cabinet

1 Door | FHDFC18

Desk End Panel

Panel | DEP

TRIM

Skin		Standard Filler		Plant On Doors	
Skin	BSKIN	Filler	F1.530	1 False Door	PD1230
	SKIN4848		F1.536		PD1236
	SKIN4896		F1.542		PD1242
	TOESKIN		F1.596		PD2430
	TSKIN		F0330		
	WSKIN30		F0342		
	WSKIN36		F0396		
	WSKIN42		F0630		
			F0642		
			F0696		
Crown		Fluted Filler		Trim	
Crown Backer	CRBACKER1.5	Fluted Filler	FF0330	Corbel Simple	CORBEL1
	CRBACKER12		FF0336	Countertop Molding	CTOP
Crown Starter	CRSTART03		FF0342	Molding	BATTEN
	CRSTART06		FF0630	Molding Outside Corner	MOC90
	CRSTART12		FF0636	Quarter Round	QTRRND
Crown Options	CROWN1		FF0642	Scribe	SCRIBE
	CROWN1.12			Splash	SPLASH4
	CROWN2				SPLASH
	CROWN2.12				SPLASH12
	CROWNA	Dishwasher End Panel	DWEP.75		
	CROWNB		DWEP1.5		
	CROWNC		DWEP3		
	CROWND	Finished Panel	FP2496		
	CROWNS		FP3096		
	CROWN MDF				
		Refrigerator End Panel	RP2496		
			RP3096		
		Refrigerator End Panel Extended Stile	RPES2496		
			RPES3096		

ITEMS LIST

ACCESSORIES

Beverages

Stemware	STEMWARE-BRASS
	STEMWARE-BRONZE
	STEMWARE-CHROME
	STEMWARE-NICKLE
Wine Bottles	WINE BOTTLE-BRASS
	WINE BOTTLE-BRONZE
	WINE BOTTLE-CHROME
	WINE BOTTLE-NICKLE

Cutting Boards

Bread Board	BREAD BOARD 16
	BREAD BOARD 18
	BREAD BOARD 24
Butcher Block	BUTCHER BLOCK

Hardware

Knobs	K-1-143
	K-1-195
	K-1-BORB
	K-2-195
	K-2-BORB
	K-3-143
	K-3-195
	K-3-BORB

Mixer Lift

Chrome Mixer Lift w/ Shelf	MIXER LIFT
-------------------------------	------------

Base Pull Outs

For Standard Blind Corner Base	BCB PULLOUT-BEAN48
	BCB PULLOUT-HALF MOON45
For Full Height Blind Corner Base	FHBCB PULLOUT-OPTIMIZER45
	FHBCB PULLOUT-OPTIMIZER48
	FHBCB PULLOUT-PREMIERE42
	FHBCB PULLOUT-PREMIERE45
For Full Height Cabinets	BASE PULLOUT (11)
	BASE PULLOUT (14)
	BASE PULLOUT (5)
	BASE PULLOUT (8)

Tip Out Trays

For Sink Bases	TIP OUT TRAY SB24
	TIP OUT TRAY SB30
	TIP OUT TRAY SB33
	TIP OUT TRAY SB36
	TIP OUT TRAY SB39

Pulls	P-1-143
	P-1-195
	P-1-BORB
	P-2-195*
	P-2-BORB
	P-3-143
	P-3-195
	P-3-BORB

Misc. Knobs & Pulls	PULL-NONSTOCK
------------------------	---------------

Filler Pullouts

Filler Pullout	FILLER PULLOUT (3)
	FILLER PULLOUT (6)

Nested Cutlery Drawers

For Standard Bases	NESTED CUTLERY DRAWER 15
	NESTED CUTLERY DRAWER 18
	NESTED CUTLERY DRAWER 21
	NESTED CUTLERY DRAWER 24

Tray Dividers

Wood	WOOD TRAY DIVIDER
Chrome	TRAY DIVIDER-REV

Recycle & Compost

Single	COMPOST BIN-SINGLE
	RECYCLE SINGLE-WOOD REV
Double	RECYCLE CENTER-CHROME SALICE
	RECYCLE CENTER-FHB21
	RECYCLE CENTER-WOOD REV
	COMPOST BIN-DOUBLE

Finishes

Paint	PAINT-5 GALLON
	PAINT-GALLON
	PAINT-QUART
Stain	STAIN-5 GALLON
	STAIN-GALLON
	STAIN-QUART

* Please note that this is the only hardware available with a 24 hour lead time. All other hardware is available at cabinet lead time.

Misc.

Misc Accessory	ACCESSORY
For Attaching	ADHESIVE200
³ / ₄ Plywood	BUILD UP STRIP

CABINET MODIFICATIONS

Base Cabinets

Decrease Depth (6" Min)	MOD-B-DD
Increase Depth (30" Max)	MOD-B-ID
Extended Base Stile	MOD-B-STILE
Change In Drawer Box Size (Per Drawer)	MOD-B-DB-SIZE

Toe Space

Remove Toekick (Per Box)	MOD-NOTOE
Toekick Modification (Per Box)	MOD-TOE
Extend cabinet face to flush with cabinet base	MOD-FURNITURE TOEKICK
Stretch cabinet face and door towards the bottom to eliminate the toekick	MOD-FURNITURE BOTTOM

Tall Cabinets

Decrease Depth (6" Min)	MOD-T-DD
Increase Depth (30" Max)	MOD-T-ID
Extended Tall Stile	MOD-T-STILE

Custom Cabinets

Whole Cabinet	CUSTOM-CABINET
Door, Drawer Face, or Frame	CUSTOM-DOOR-FRAME
Floating Shelf	CUSTOM-FLOATING SHELF
Custom Hood	CUSTOM-HOOD
Plant-On Door	CUSTOM-PD
Custom Roll Out Shelf	CUSTOM-ROS
Custom Shelf	CUSTOM-SHELF
Custom Trim	CUSTOM-TRIM

Wall Cabinets

Decrease Depth (6" Min)	MOD-W-DD
Increase Depth (24" Max)	MOD-W-ID
Extended Wall Stile	MOD-W-STILE

Vanities

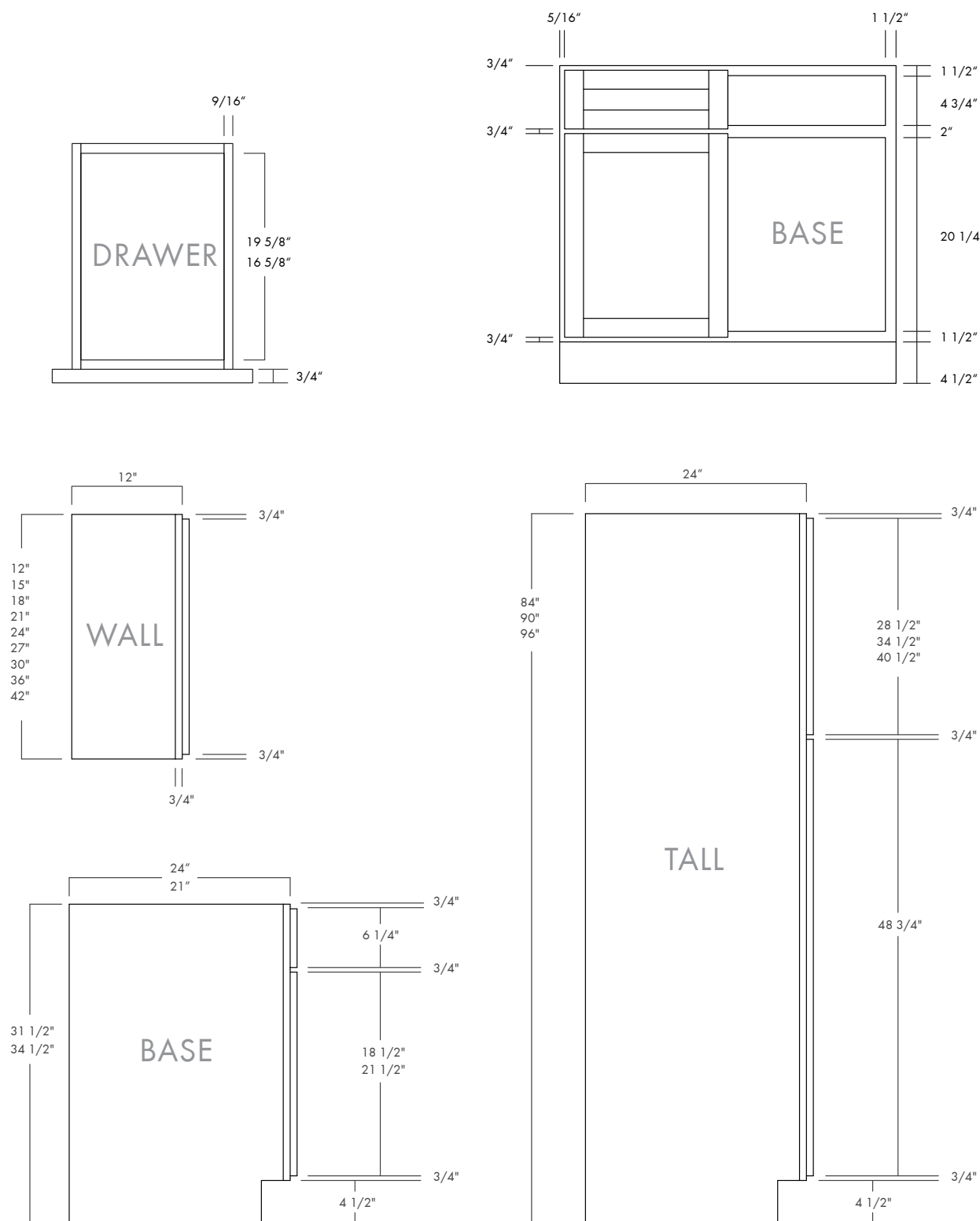
Decrease Depth (6" Min)	MOD-V-DD
Increase Depth (30" Max)	MOD-V-ID
Extended Vanity Stile	MOD-V-STILE
Reduce Roll Out Shelf To Vanity Depth	MOD-V-ROS
Modify a Vanity Base to a Vanity Sink Base Inverted	MOD-V-INV
Change In-Drawer Box Size (12in minimum) Per Drawer Vanity Cabinet	MOD-V-DB-SIZE

Other

Change In Drawer Box Size (Per Drawer)	MOD-B-DB-SIZE
Modify To Range Base	MOD-B-RNG
Switch Lazy Susan to a Fixed Shelf	MOD-LS TO SHELF
20% Discount for No Doors on Craftsman	MOD-NODOOR
Change double door to a single door. Applies to 24" wide cabinets (No warping warranty)	MOD-SINGLE DOUBLE DOOR
Change double drawer to a single drawer. Applies to cabinet widths 33", 36", 39".	MOD-SINGLE DOUBLE DRAWER
Credit for previously paid sample door	SAMPLE DOOR CREDIT

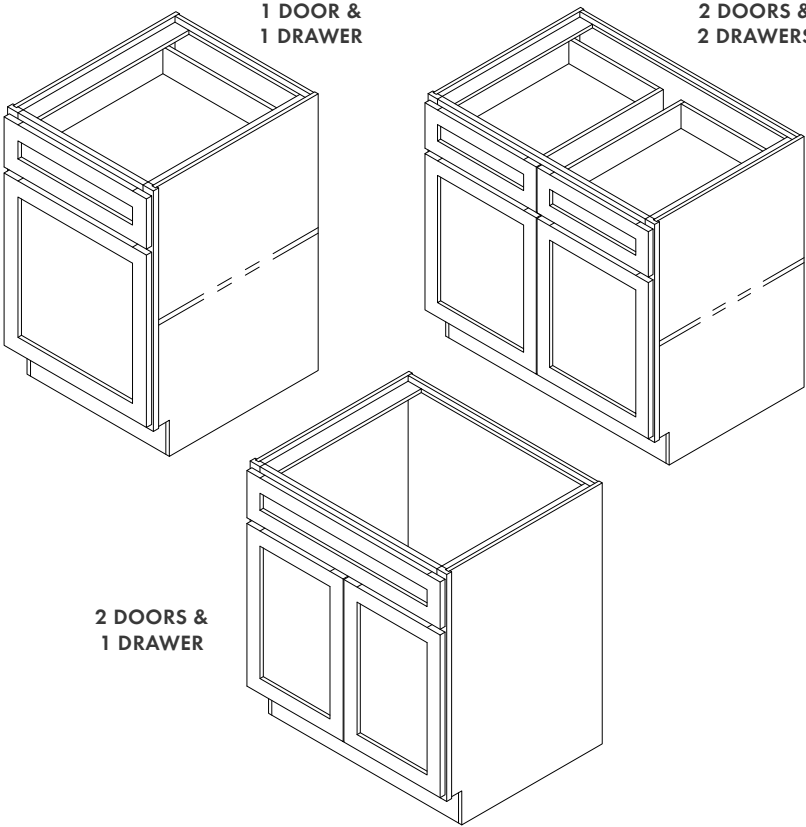
CABINET SPECIFICATIONS

These are our specifications for our Craftsman and Select Series cabinets. If you are in need of a specific dimension that is not listed, please let us know and we will provide it for you!



FINISHED TOEKICK SPACE IS 4.5" TALL AND 2.125" DEEP.

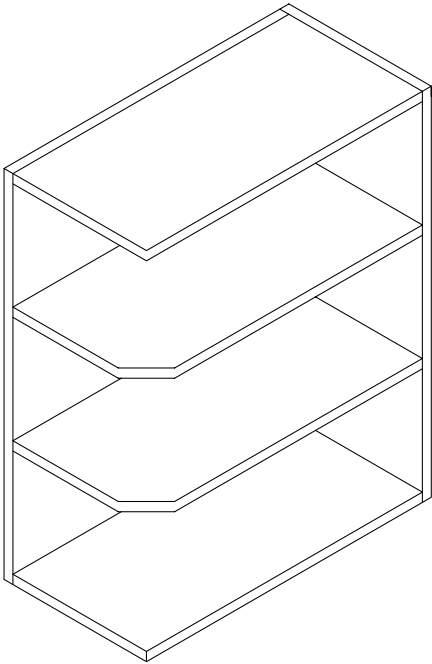
CABINET SPECIFICATIONS



STANDARD BASE	
WIDTH	12" - 39"
HEIGHT	34.5"
TOEKICK	4.5" tall 2.125" deep
CABINET DEPTH	24"
SHELF DEPTH	22"
DRAWER DEPTH	3"
SHELVES INCLUDED	1
HINGES PER DOOR	2

OPTIONS: Craftsman is available in increments of 1.5" from sizes 12" - 27". Available in increments of 3" from sizes 27" - 39"

NOTE: 12" - 30" bases have one drawer and 33" - 39" have two drawers.



BASE OPEN SHELF	
WIDTH	12"
HEIGHT	34.5"
STANDARD CABINET DEPTH	24"
SHELVES INCLUDED	2

CABINET SPECIFICATIONS

SINK BASE

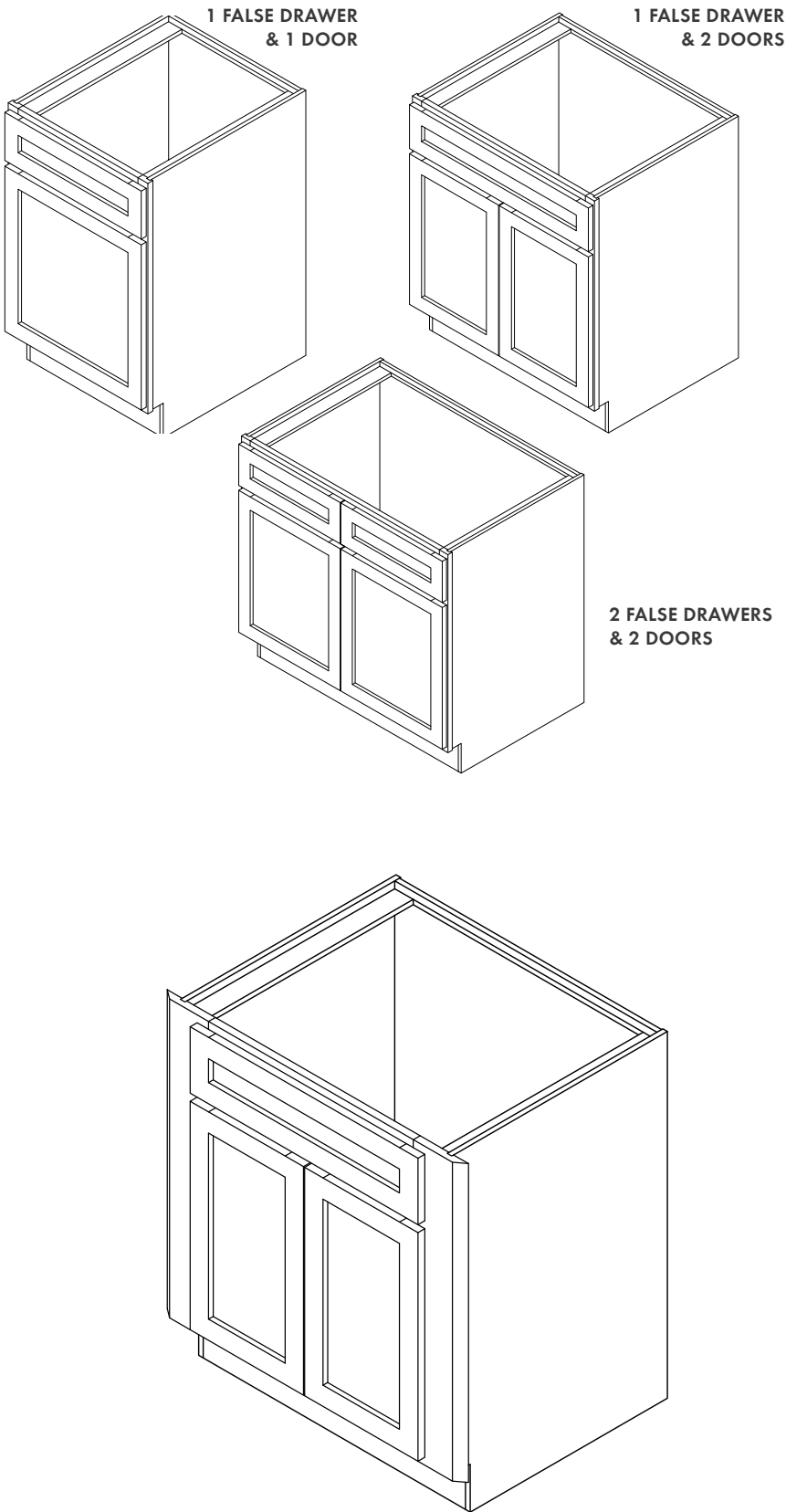
WIDTH	18" - 39"
HEIGHT	34.5"
CABINET DEPTH	24"
SHELVES INCLUDED	0
HINGES PER DOOR	2

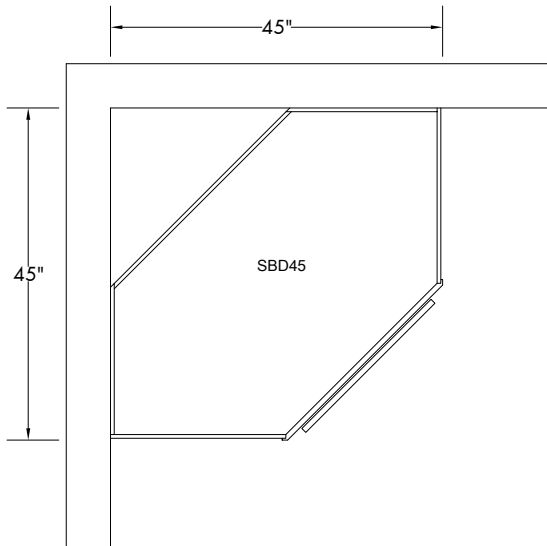
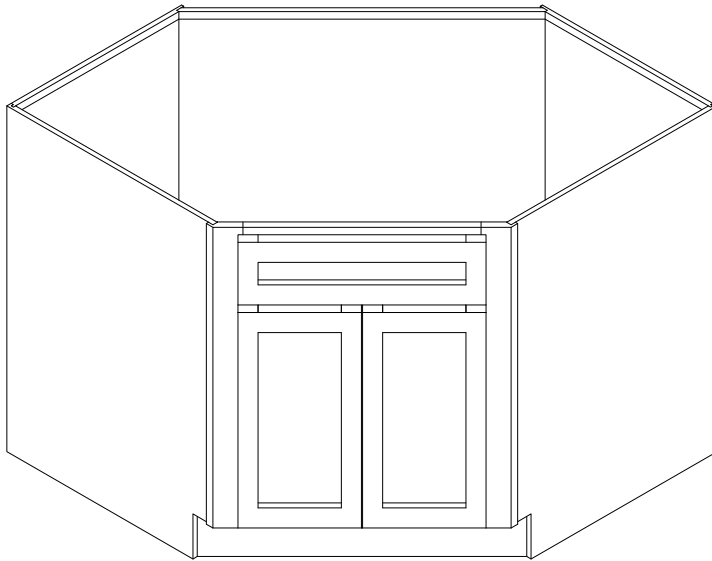
CORNER SINK BASE

WIDTH	30.75"
HEIGHT	34.5"
TOEKICK	4.5" tall 2.125" deep
CABINET DEPTH	24"
SHELVES INCLUDED	0
HINGES PER DOOR	2

DETAILS: This is a standard (rectangle) sink base cabinet that is modified with stiles on the face frame. Stiles make installation easier in the field.

NOTE: 45" is required from the wall to the outer most edge in either direction. No extra filler required. No shelves and no holes for shelves are provided. False drawer attached.





DIAGONAL SINK BASE

WIDTH	45"
HEIGHT	30.5"
TOEKICK	4.5" tall 2.125" deep
CABINET DEPTH	31"
SHELVES INCLUDED	0
HINGES PER DOOR	2

DETAILS: This is a large, diagonal sink base cabinet that provides ample room for full sized sinks in a corner application and increased storage capacity. In addition, the plywood box is sized such that it will fit through a 31-1/4" doorway opening. The cabinet was engineered with the installer in mind, as it has 20" rear panels to make securing it to the studs in the wall easier.

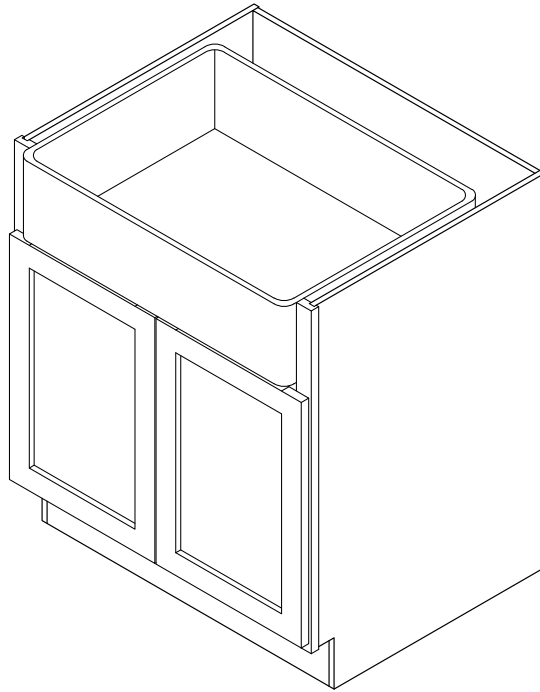
NOTE: 45" is required from the wall to the outer most edge in either direction. No extra filler required. No shelves and holes for shelves are provided.

CABINET SPECIFICATIONS

FARM SINK BASE

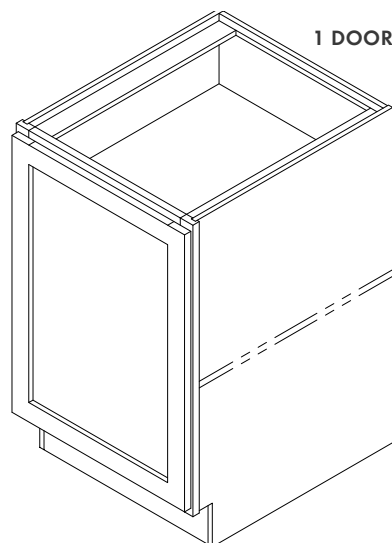
WIDTH	30" - 39"
HEIGHT	34.5"
TOEKICK	4.5" tall 2.125" deep
CABINET DEPTH	24"
SHELVES INCLUDED	0
HINGES PER DOOR	2

NOTE: All farm sink bases are custom to each individual sink and requires sink specifications to be sent in with the order. (Some cases may require the sink to be brought in).

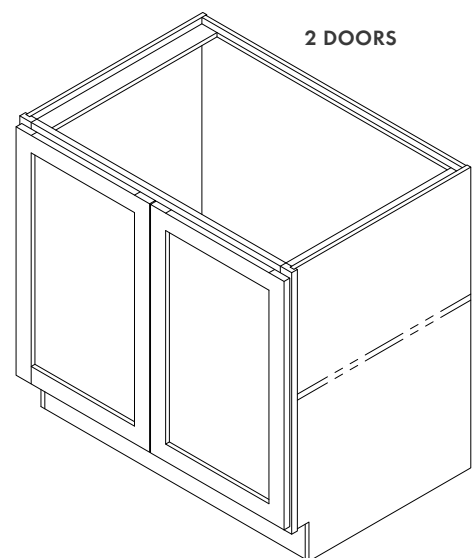


FULL HEIGHT BASE

WIDTH	9" - 39"
HEIGHT	34.5"
TOEKICK	4.5" tall 2.125" deep
CABINET DEPTH	24"
SHELF DEPTH	22"
SHELVES INCLUDED	2
HINGES PER DOOR	2

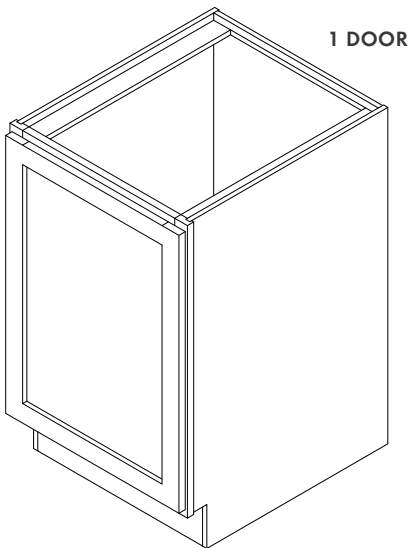


1 DOOR

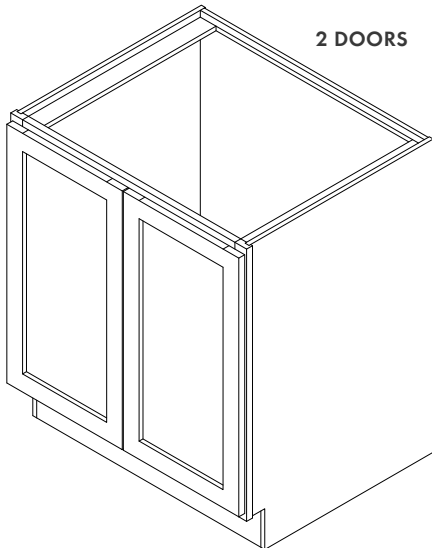


2 DOORS

OPTIONS: Craftsman is available in increments of 1.5" from sizes 12" - 27". Available in increments of 3" from sizes 27" - 39"



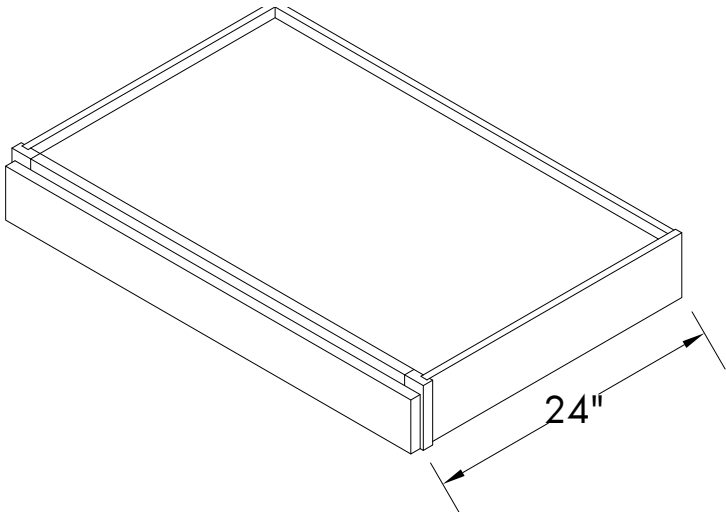
1 DOOR



2 DOORS

FULL HEIGHT SINK BASE	
WIDTH	18" - 39"
HEIGHT	34.5"
TOEKICK	4.5" tall 2.125" deep
CABINET DEPTH	24"
SHELVES INCLUDED	0
HINGES PER DOOR	2

OPTIONS: Craftsman is available in increments of 1.5" from sizes 12" - 27". Available in increments of 3" from sizes 27" - 39".



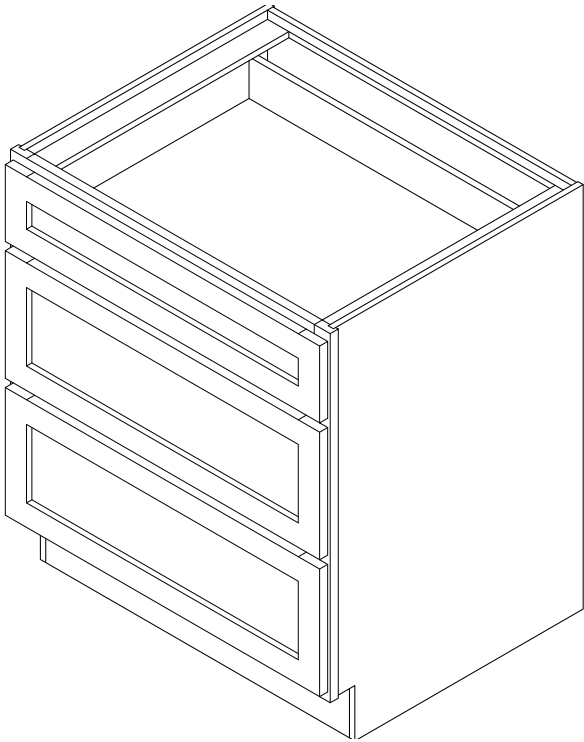
KITCHEN KNEE DRAWER	
WIDTH	24", 27", 30", 33", 36"
HEIGHT	4.5"
CABINET DEPTH	24"

CABINET SPECIFICATIONS

3 DRAWER BASE	
WIDTH	12" - 36"
HEIGHT	34.5"
TOEKICK	4.5" tall 2.125" deep
CABINET DEPTH	24"

DETAILS: One cutlery drawer on top (3.25" deep), two larger 6.5" deep drawers below.

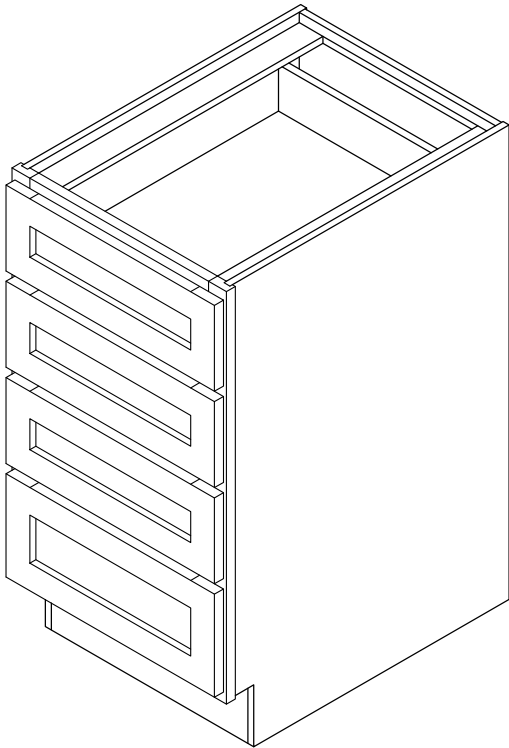
OPTIONS: Craftsman is available in increments of 1.5" from sizes 12" - 27". Available in increments of 3" from sizes 27" - 39".

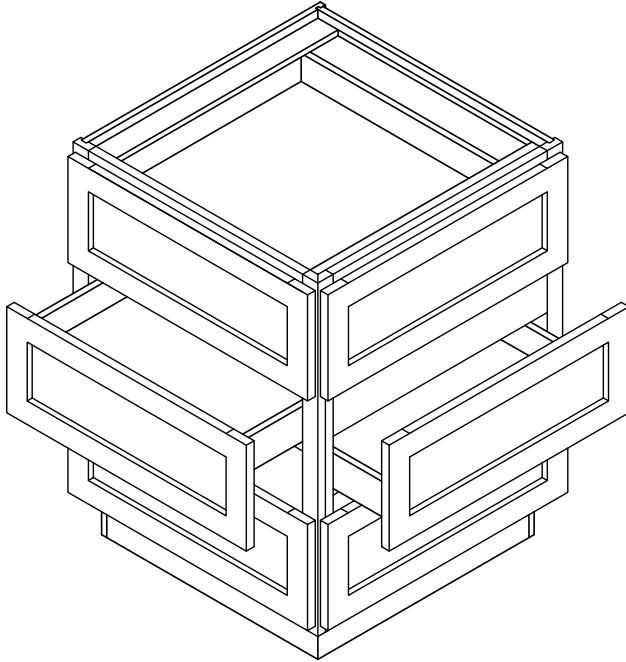


4 DRAWER BASE	
WIDTH	15" - 24"
HEIGHT	34.5"
TOEKICK	4.5" tall 2.125" deep
CABINET DEPTH	24"

DETAILS: Each drawer is the same depth (3.25" deep), the top three drawers have the same drawer face while the bottom drawer has a slightly larger drawer face.

OPTIONS: Craftsman is available in increments of 1.5" from sizes 12" - 24".

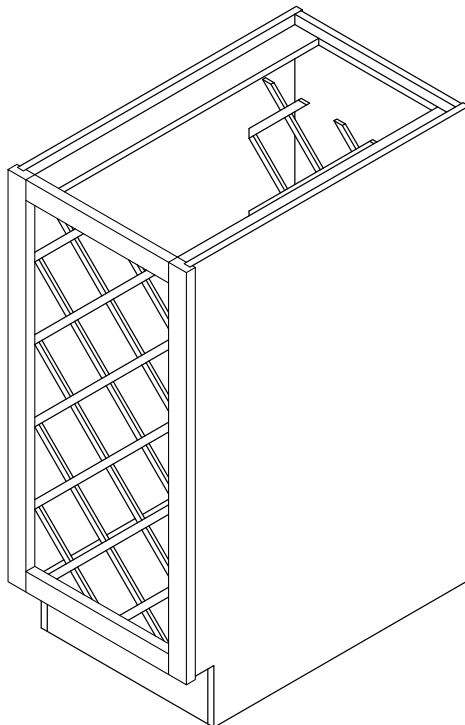




6 DRAWER BASE

WIDTH	24"
HEIGHT	34.5"
TOEKICK	4.5"
CABINET DEPTH	24"

DETAILS: Available for both end of cabinet runs and kitchen islands.



WINE RACK

WIDTH	15" face
HEIGHT	30" face

DETAILS: Finished interior is standard. Wine rack holds 12 bottles.

CABINET SPECIFICATIONS

BLIND CORNER BASE

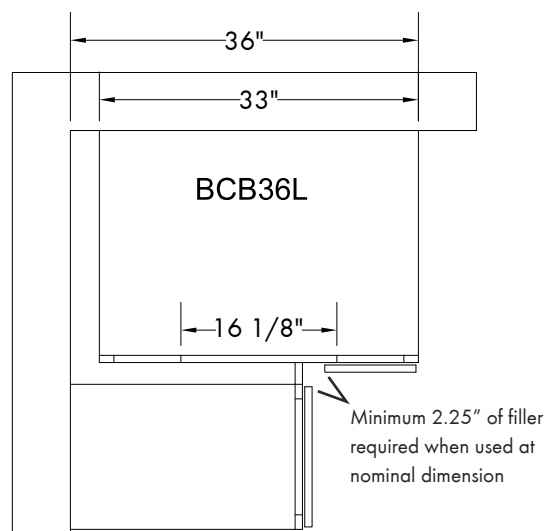
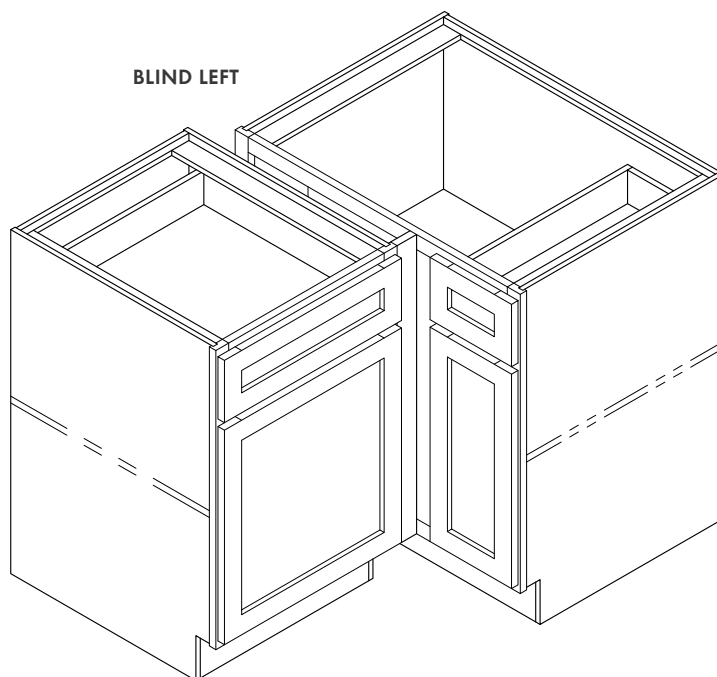
WIDTH	36" - 48"	
HEIGHT	34.5"	
TOEKICK	4.5" tall 2.125" deep	
CABINET DEPTH	24"	
SHELF DEPTH	22"	
SHELVES INCLUDED	1	
HINGES PER DOOR	2	
SPECIFICATIONS	36" door width	9.5"
	Opening width	7"
	39" door width	13"
	Opening width	10"
	42" door width	16"
	Opening width	13"
	45" door width	19"
	Opening width	16"
	48" door width	22"
	Opening width	19"

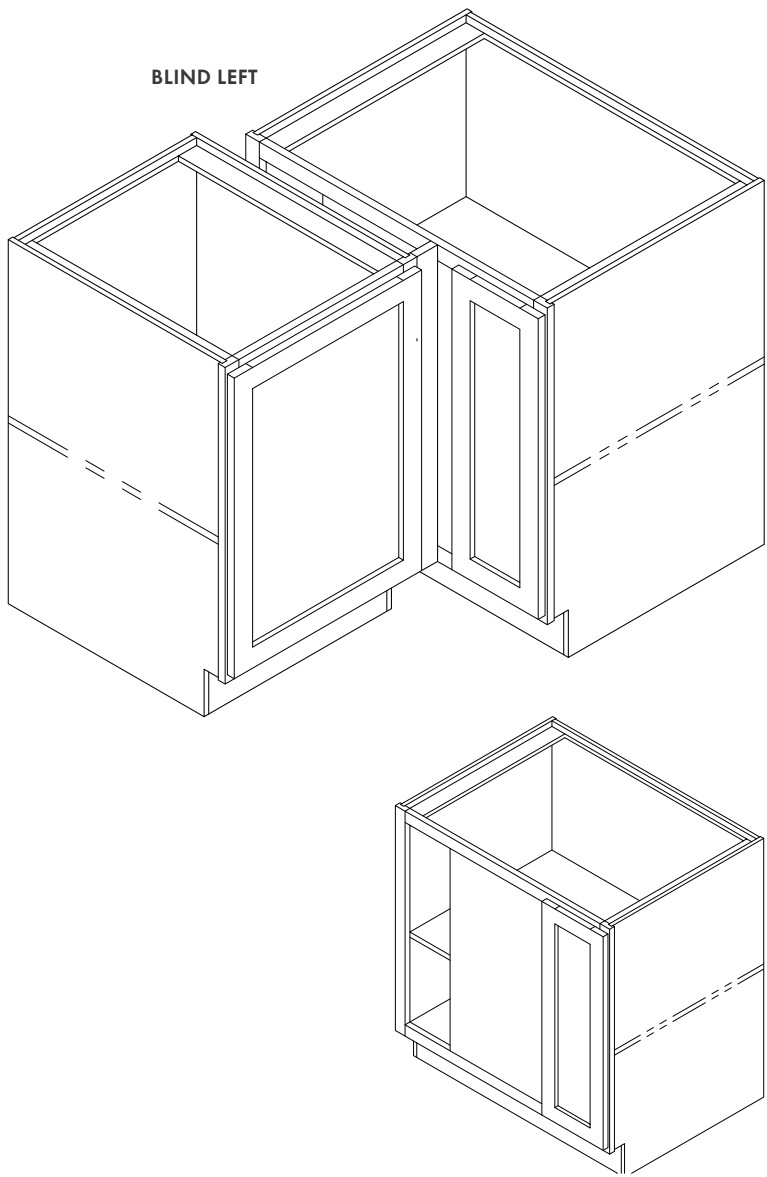
DETAILS: This cabinet is ordered as a Blind Left or Blind Right as it makes a difference in the construction of the cabinet.

NOTE: Blind cabinets always hinge on the blind side - BCB45L hinges left.

NOTE:

BLIND LEFT





FULL HEIGHT BLIND CORNER BASE	
WIDTH	36" - 48"
HEIGHT	34.5"
TOEKICK	4.5" tall 2.125" deep
CABINET DEPTH	24"
SHELF DEPTH	22"
SHELVES INCLUDED	1
HINGES PER DOOR	2
SPECIFICATIONS	36" door width 9.5" Opening width 7"
	39" door width 13" Opening width 10"
	42" door width 16" Opening width 13"
	45" door width 19" Opening width 16"
	48" door width 22" Opening width 19"

NOTE: Blind cabinets always hinge on the blind side – BCB45L hinges left.

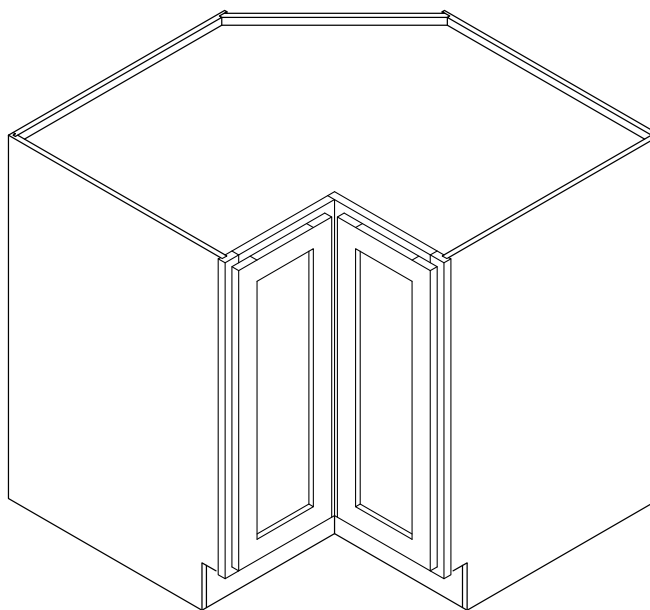
CABINET SPECIFICATIONS

90 DEGREE LAZY SUSAN CORNER BASE

WIDTH	33", 36"
HEIGHT	34.5"
TOEKICK	4.5" tall 2.125" deep
FACE	12" (each side)
SHELF OPTIONS	2 Lazy Susan rotating shelves
HINGES PER DOOR	2

DETAILS: There are two door panels, joined at the corner with hinges, the door opens hinging at the right or left of the cabinet (swiveling both doors outward).

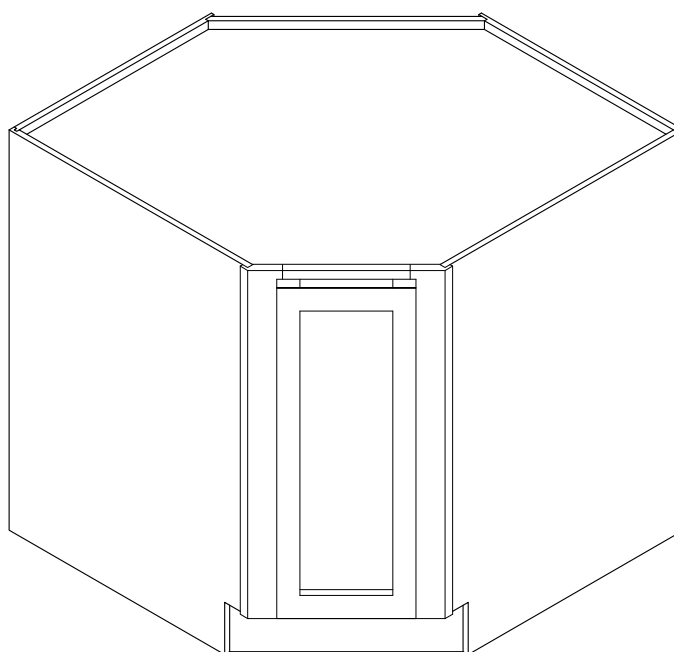
NOTE: The LS33 door will be slab or 2 1/4" stile and rail. The opening on this cabinet is very small.

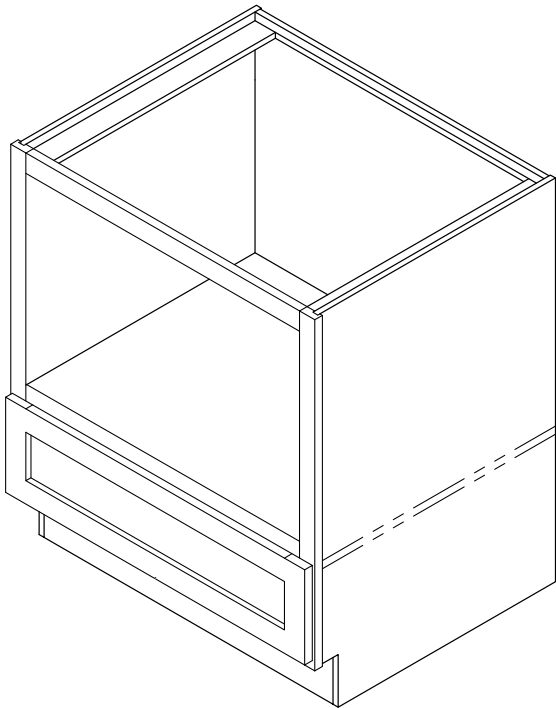


DIAGONAL LAZY SUSAN CORNER BASE

WIDTH	36"
HEIGHT	34.5"
TOEKICK	4.5" tall 2.125" deep
FACE	17"
SHELF OPTIONS	2 Lazy Susan rotating shelves
HINGES PER DOOR	2

NOTE: 36" space needed from each wall.

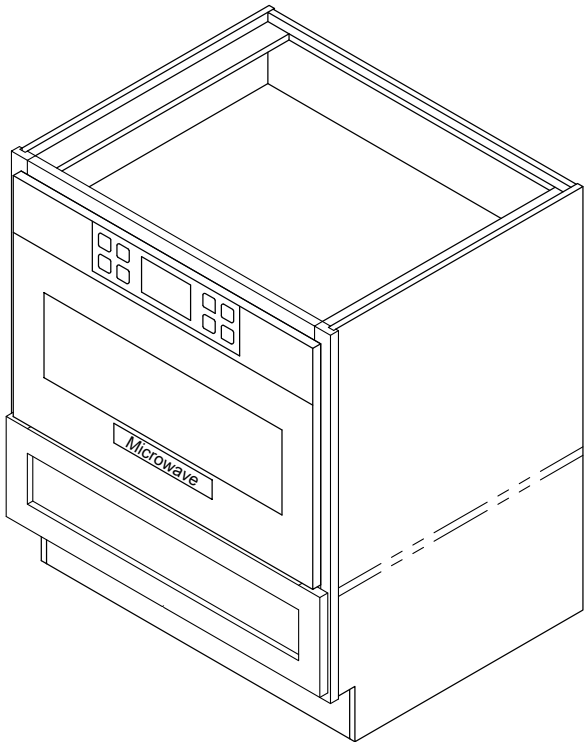




STANDARD MICROWAVE BASE

WIDTH	24", 27", 30"
HEIGHT	34.5"
MAX RECOMMENDED MICROWAVE SIZE	19" wide 15" tall 23" deep

DETAILS: This microwave base cabinet is designed with a flush shelf for the microwave to sit on and a single drawer below for additional storage.



CUSTOM MICROWAVE BASE

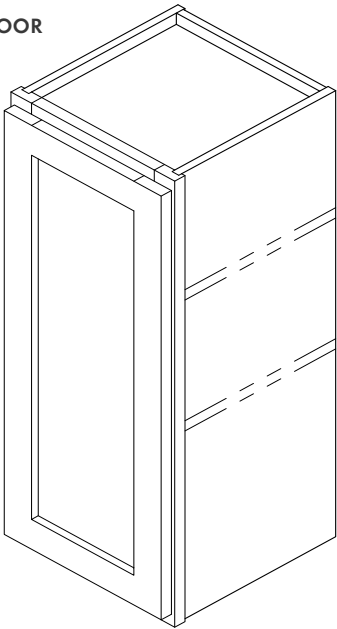
WIDTH	24", 27", 30"
HEIGHT	34.5"
TOEKICK	4.5" tall 2.125" deep
CABINET DEPTH	24"

DETAILS: Designed for built-in style microwaves with trim.

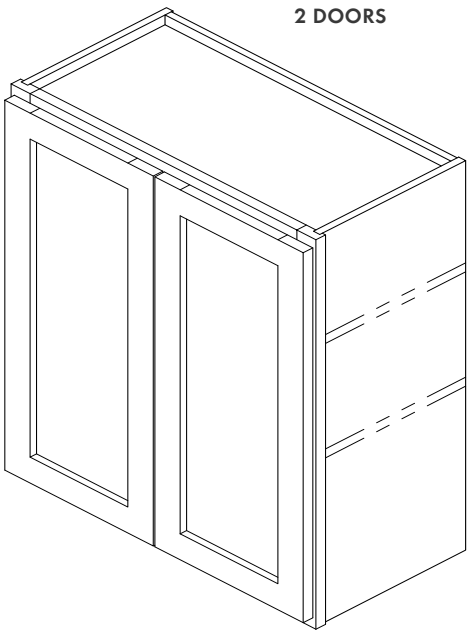
CABINET SPECIFICATIONS

STANDARD WALL		
WIDTH	9" - 39"	
HEIGHT	12" - 42"	
CABINET DEPTH	12"	
SHELF DEPTH	10"	
SHELVES INCLUDED PER CABINET HEIGHT	12" - 15"	0
	18" - 27"	1
	30" - 36"	2
	42"	3
HINGES PER DOOR	12" - 33"	2
	34" - 42"	3

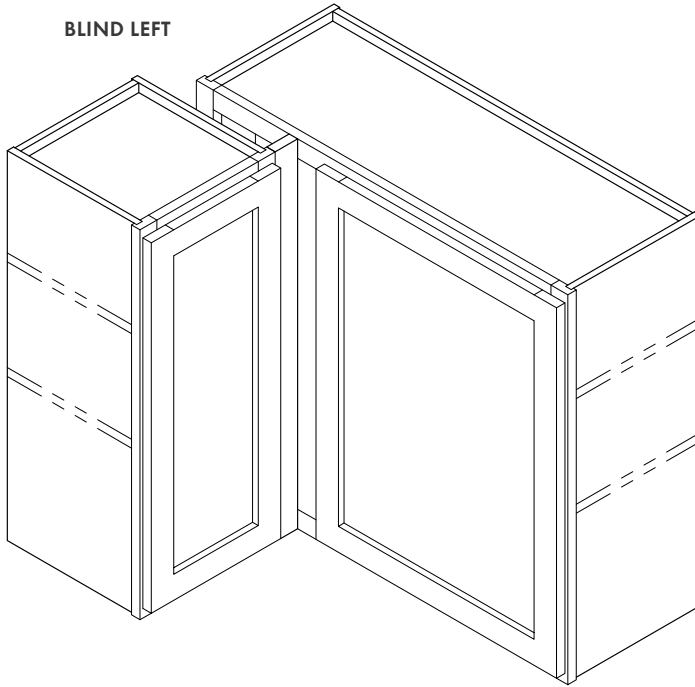
1 DOOR



2 DOORS



BLIND LEFT



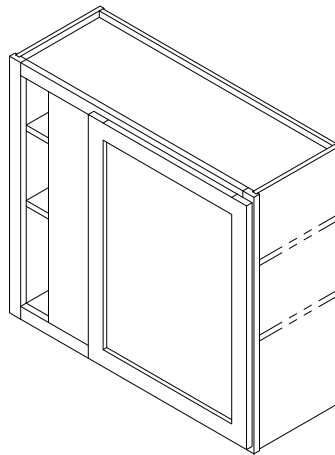
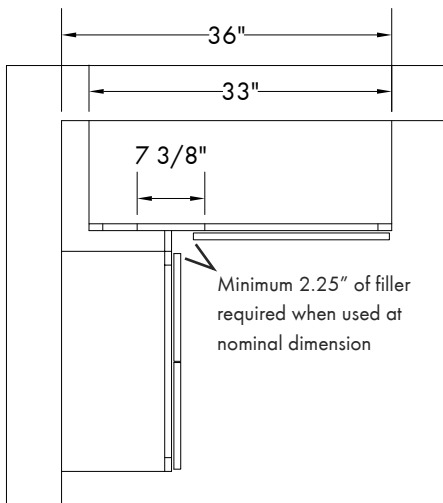
BLIND CORNER WALL

WIDTH	36" (installed)	
HEIGHT	30" 36" 42"	
CABINET DEPTH	12"	
SHELF DEPTH	10"	
SHELVES INCLUDED	30" - 36"	2
PER CABINET HEIGHT	42"	3
HINGES PER DOOR	30"	2
	36" - 42"	3

DETAILS: A blind wall cabinet is a corner cabinet that is 33" in width but is designed to fill 36" of space. 21" of the cabinet is visible, the remaining width of the cabinet sticks into the corner—providing storage space that is usable and accessible.

NOTE: The blind corner wall cabinet is designed to fill a 36" - 39" space, the actual cabinet width is 33" (See installation guidelines)
Blind cabinets always hinge on the blind side – BCW3630L hinges left.

SPECIFIC: BCW36
Door width: 22"
Opening width: 19"

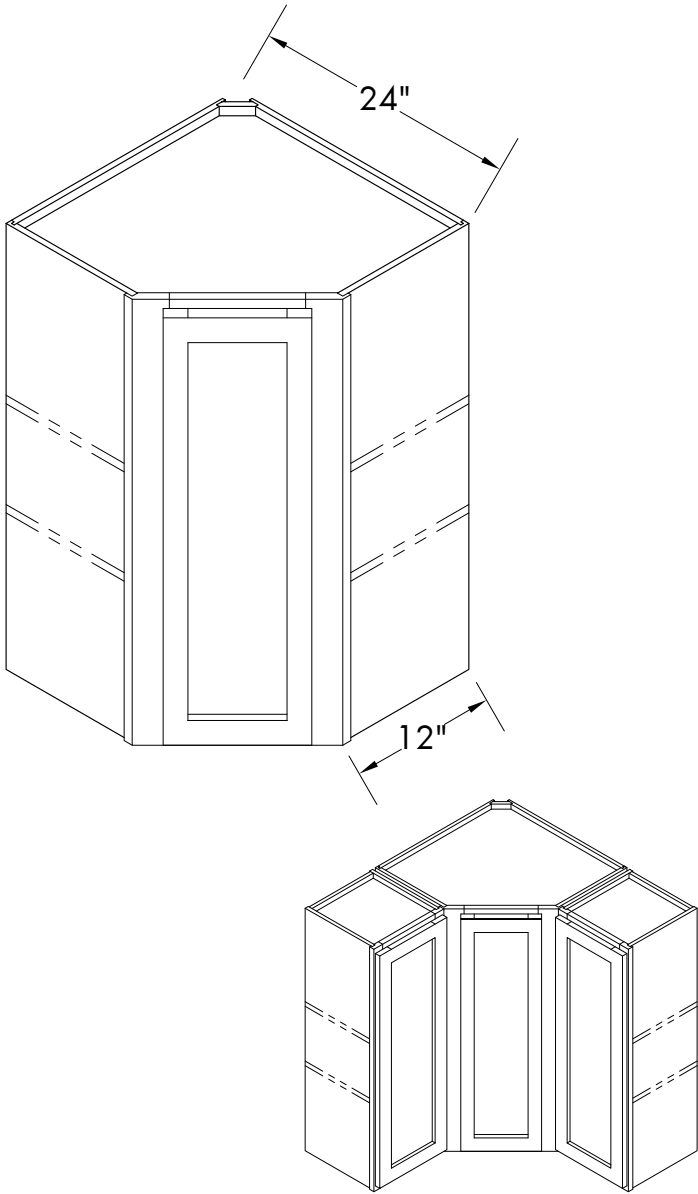


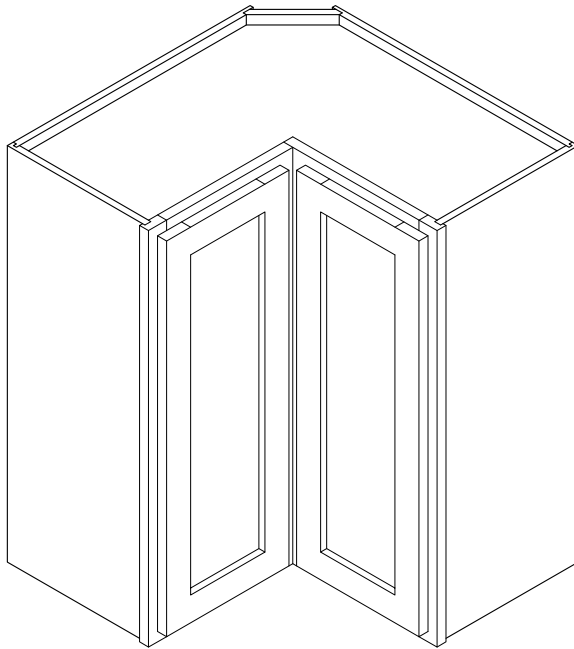
CABINET SPECIFICATIONS

DIAGONAL CORNER WALL		
WIDTH	24" - 27"	
HEIGHT	30"	
	36"	
	42"	
CABINET DEPTH	24" - 27"	
SHELF DEPTH	22" - 25"	
SHELVES INCLUDED PER CABINET HEIGHT	30" - 36"	2
	42"	3
HINGES PER DOOR	30"	2
	36" - 24"	3

DETAILS: Wall corner cabinet with a 45 degree angled door and full depth shelves.

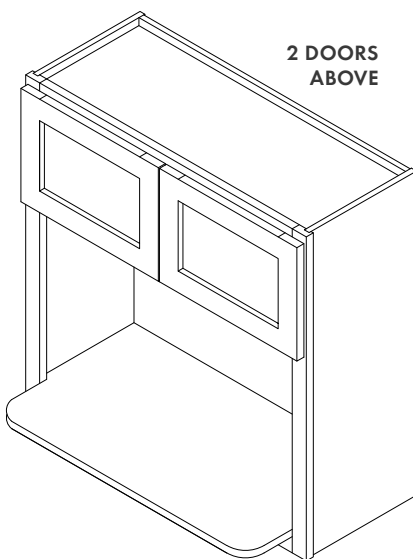
NOTE: The 27" deep DCW extends further than the standard wall cabinet depth and always require skins.



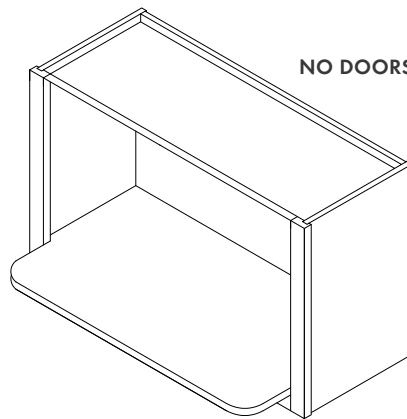


WALL EASY REACH		
WIDTH	24"	
HEIGHT	30" 36" 42"	
CABINET DEPTH	12"	
SHELF DEPTH	10"	
SHELVES INCLUDED	30" - 36"	2
PER CABINET HEIGHT	42"	3
HINGES PER DOOR	30"	2
	36" - 42"	3

DETAILS: Wall Easy Reach is a wall corner cabinet. It is a 90 degree cabinet with 12" of accessibility from the corner out in both directions. There are two door panels, joined at the corner with hinges, the door opens hinging at the right or left of the cabinet (swiveling both doors outward).



2 DOORS
ABOVE



NO DOORS

MICROWAVE SHELF		
WIDTH	30"	
HEIGHT	30" 36" 42"	
MAX RECOMMENDED MICROWAVE SIZE	26" wide	
	15" tall	
	16" deep	

DETAILS: Microwave shelf cabinet is a wall cabinet that includes a finished shelf 17 1/4" deep for the microwave to sit on and two doors above the shelf for additional storage.

NOTE: MWS3018 does not have any doors above the microwave cavity.

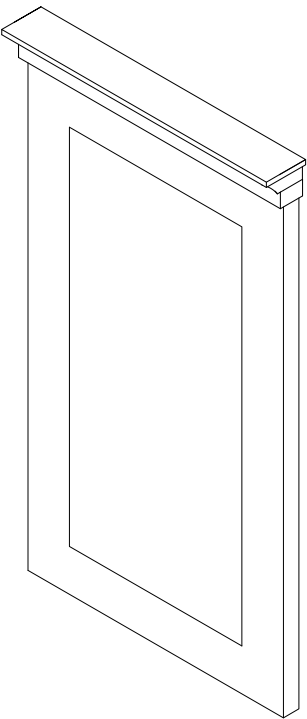
CABINET SPECIFICATIONS

WALL MIRROR

WIDTH 24", 30"

HEIGHT 30"

NOTE: Founder's Choice does not provide the glass insert for this piece.

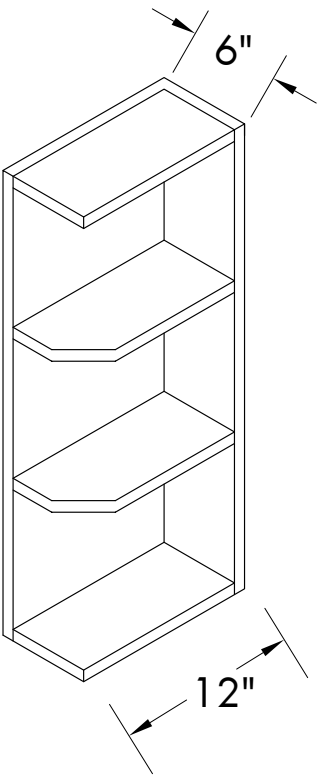


WALL OPEN SHELF

WIDTH 6"

HEIGHT 30", 36", 42"

DETAILS: Wall Open shelf is designed to cap the end of a wall cabinet run. Open shelves will always have a finished interior.



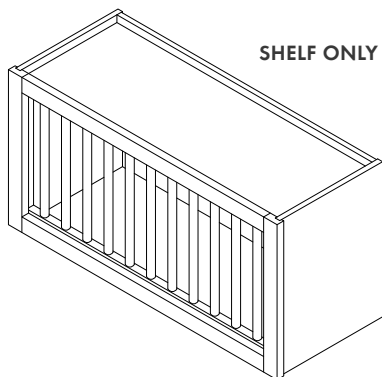
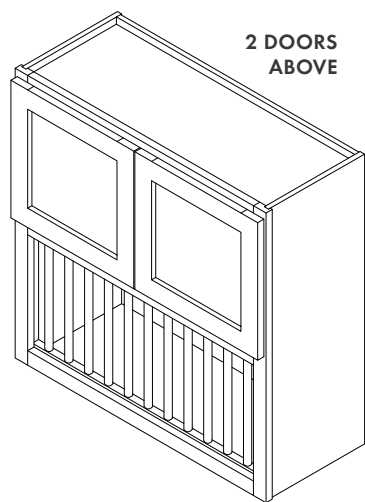
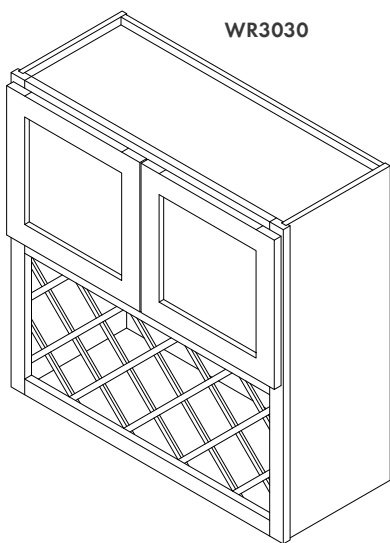
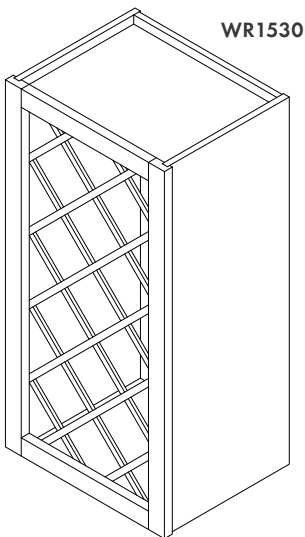


PLATE RACK

WIDTH	30" - 39"
HEIGHT	12" - 24"

DETAILS: Plate rack face is 15" x 30" in each scenario. Finished interior is standard

NOTE: Plate rack holds 12 plates. The plate rack will not hold plates larger than 11" in diameter.



WINE RACK

WIDTH	WR1530	15"
	WR3030	30"
HEIGHT	WR1530	30"
	WR3030	30"

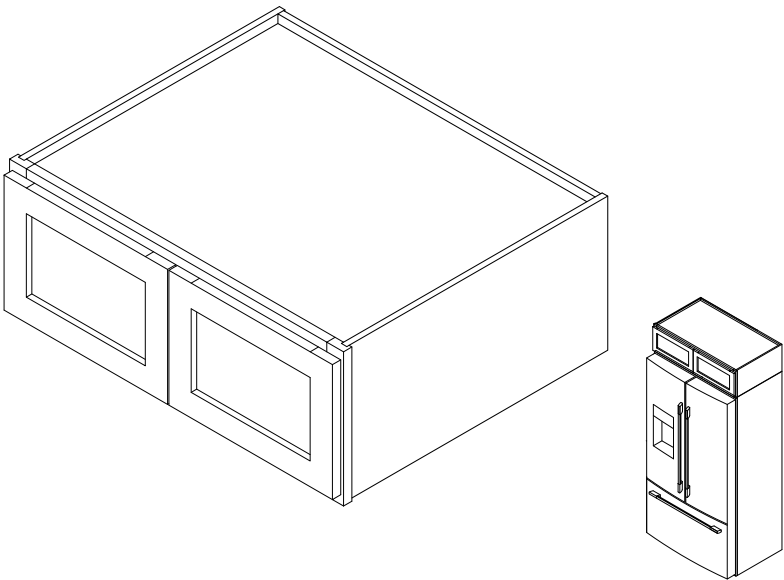
DETAILS: WR1530 is a vertical wine rack cabinet. WR3030 is a horizontal wine rack wall cabinet with two doors above. Wine rack face is 15" x 30" in each scenario.

NOTES: Finished interior is standard. Wine rack holds 12 bottles.

CABINET SPECIFICATIONS

REFRIGERATOR WALL		
WIDTH	30"- 39"	
HEIGHT	12"- 24"	
CABINET DEPTH	24"	
SHELF DEPTH	22"	
SHELVES INCLUDED PER CABINET	12" - 15"	0
HEIGHT	18"+	1

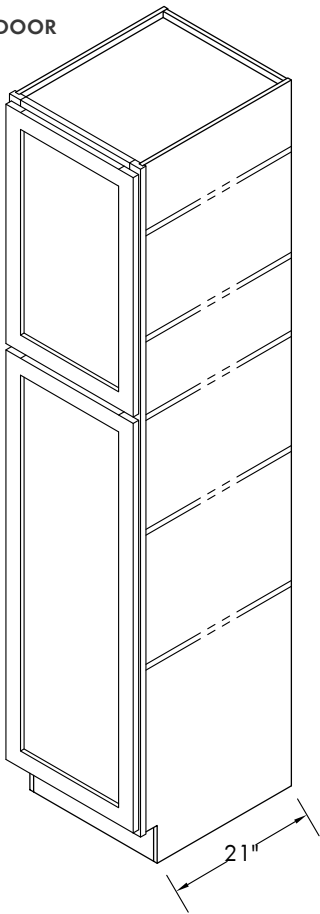
HINGES PER DOOR	12" - 24"	2
-----------------	-----------	---



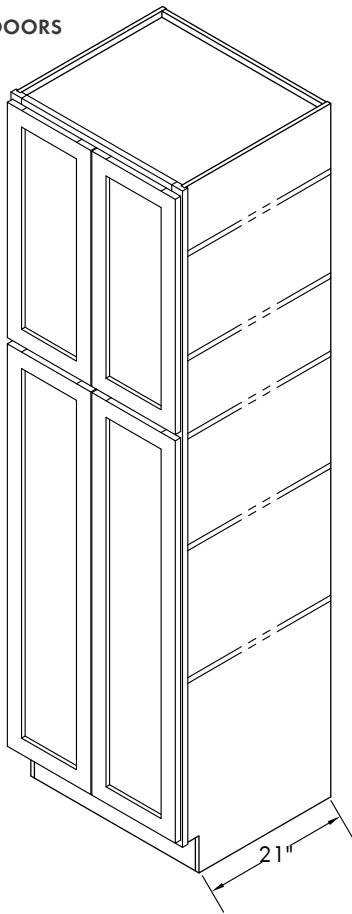
LINEN CABINET		
WIDTH	18" 24"	
HEIGHT	84" 90" 96"	
TOEKICK	4.5" tall 2.125" deep	
CABINET DEPTH	21"	
SHELVES INCLUDED PER CABINET	84" - 90"	5
HEIGHT	96"	6

HINGES PER DOOR	Top	2
	Bottom	3

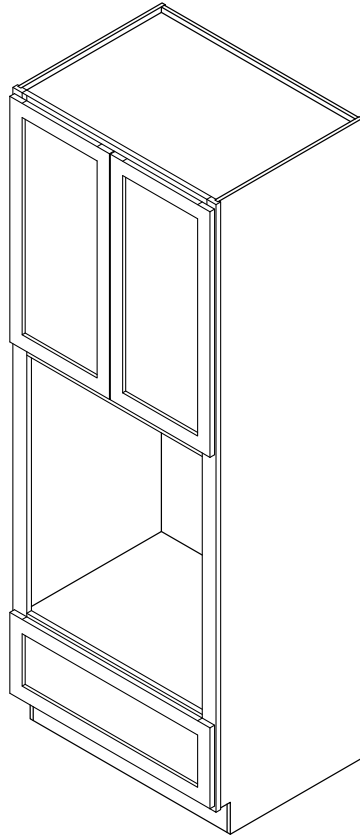
1 DOOR



2 DOORS



CABINET SPECIFICATIONS

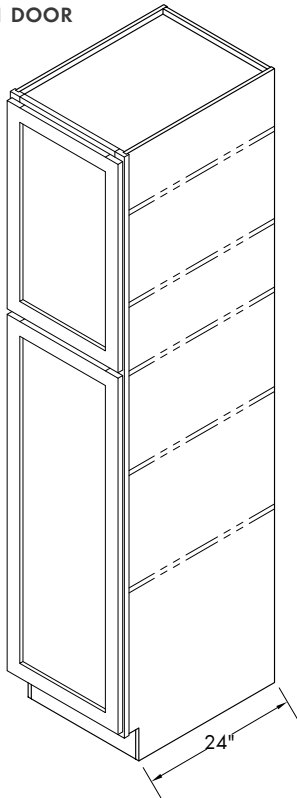


OVEN CABINET		
WIDTH	33"	
HEIGHT	84" 90" 96"	
TOEKICK	4.5" tall 2.125" deep	
CABINET DEPTH	24"	
SHELF DEPTH	22"	
SHELVES INCLUDED	84" - 90"	1
PER CABINET HEIGHT	96"	2
HINGES PER DOOR	2	

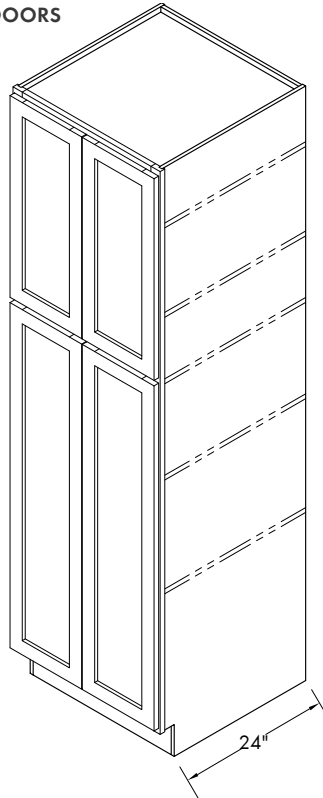
DETAILS: The oven cabinet features one drawer below the oven cavity and two doors above.

NOTE: Requires oven specifications to be sent in with order (note proper cut size).

1 DOOR



2 DOORS

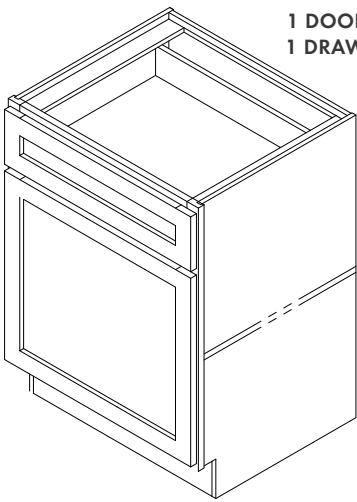


UTILITY CABINET		
WIDTH	18" 24"	
HEIGHT	84" 90" 96"	
TOEKICK	4.5" tall 2.125" deep	
CABINET DEPTH	24"	
SHELVES INCLUDED	84" - 90"	5
PER CABINET HEIGHT	96"	6
HINGES PER DOOR	Top	2
	Bottom	4

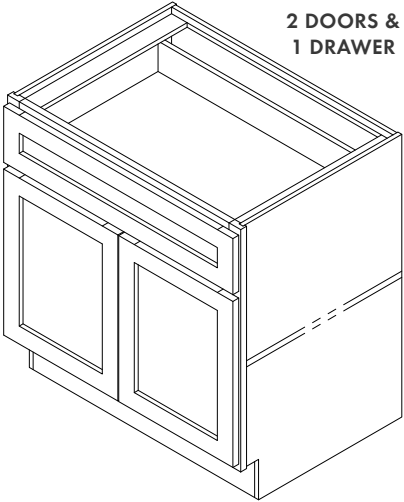
CABINET SPECIFICATIONS

VANITY BASE

WIDTH	12" - 36"
HEIGHT	31.5" - 34.5" (/Tall)
TOEKICK	4.5" tall 2.125" deep
CABINET DEPTH	21"
SHELF DEPTH	19"
SHELVES INCLUDED	1
HINGES PER DOOR	2



1 DOOR &
1 DRAWER



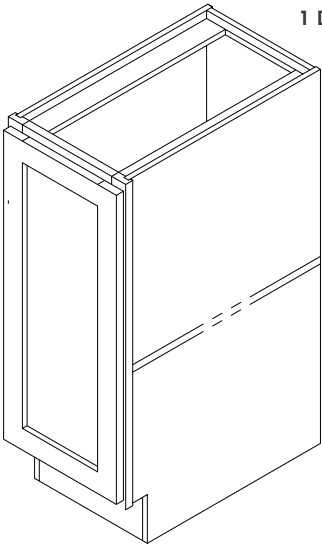
2 DOORS &
1 DRAWER

OPTIONS: Craftsman is available in increments of 1.5" from sizes 12" - 27". Available in increments of 3" from sizes 27" - 36".

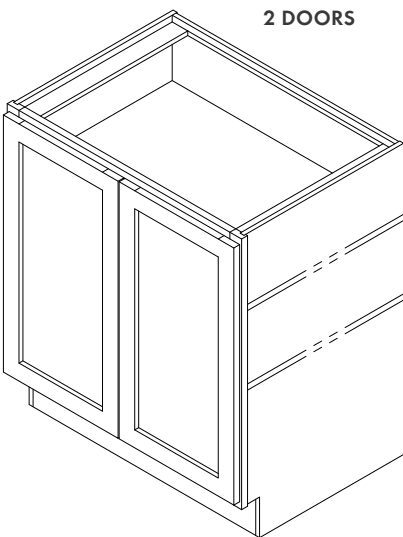
NOTE: Options available to invert the cabinet, making it a sink base with a functioning drawer on bottom.

FULL HEIGHT VANITY BASE

WIDTH	12" - 36"
HEIGHT	31.5" - 34.5" (/Tall)
TOEKICK	4.5" tall 2.125" deep
CABINET DEPTH	21"
SHELF DEPTH	19"
SHELVES INCLUDED	Normal 1 Tall 2
HINGES PER DOOR	2

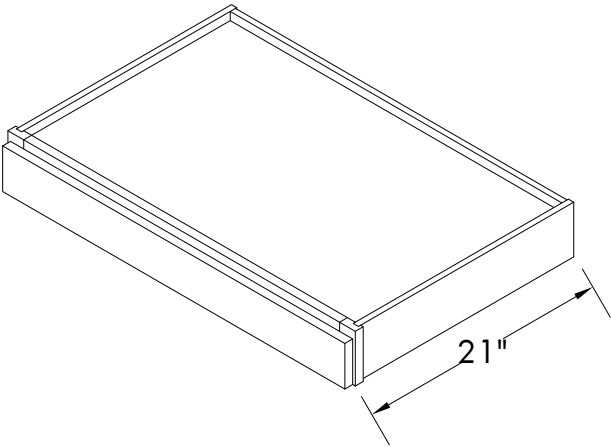


1 DOOR

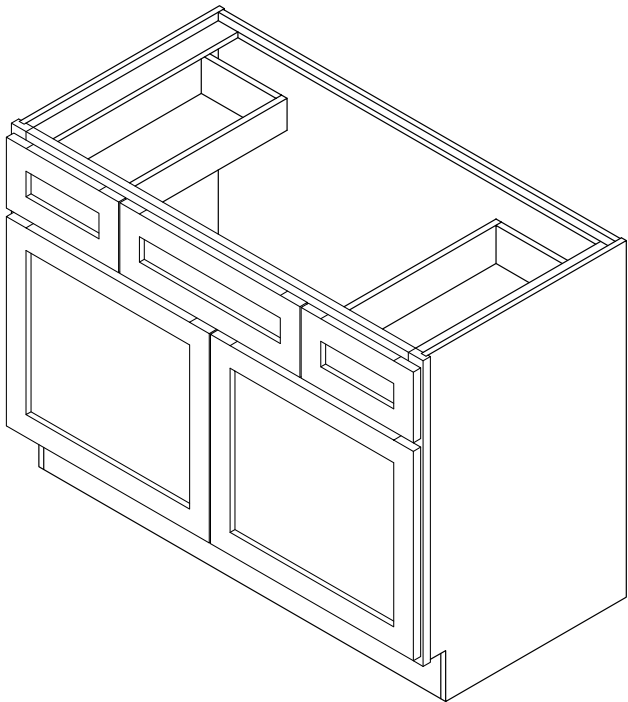


2 DOORS

OPTIONS: Craftsman is available in increments of 1.5" from sizes 9" - 27". Available in increments of 3" from sizes 27" - 36".



VANITY KNEE DRAWER	
WIDTH	24", 27", 30", 33", 36"
HEIGHT	4.5"
CABINET DEPTH	21"

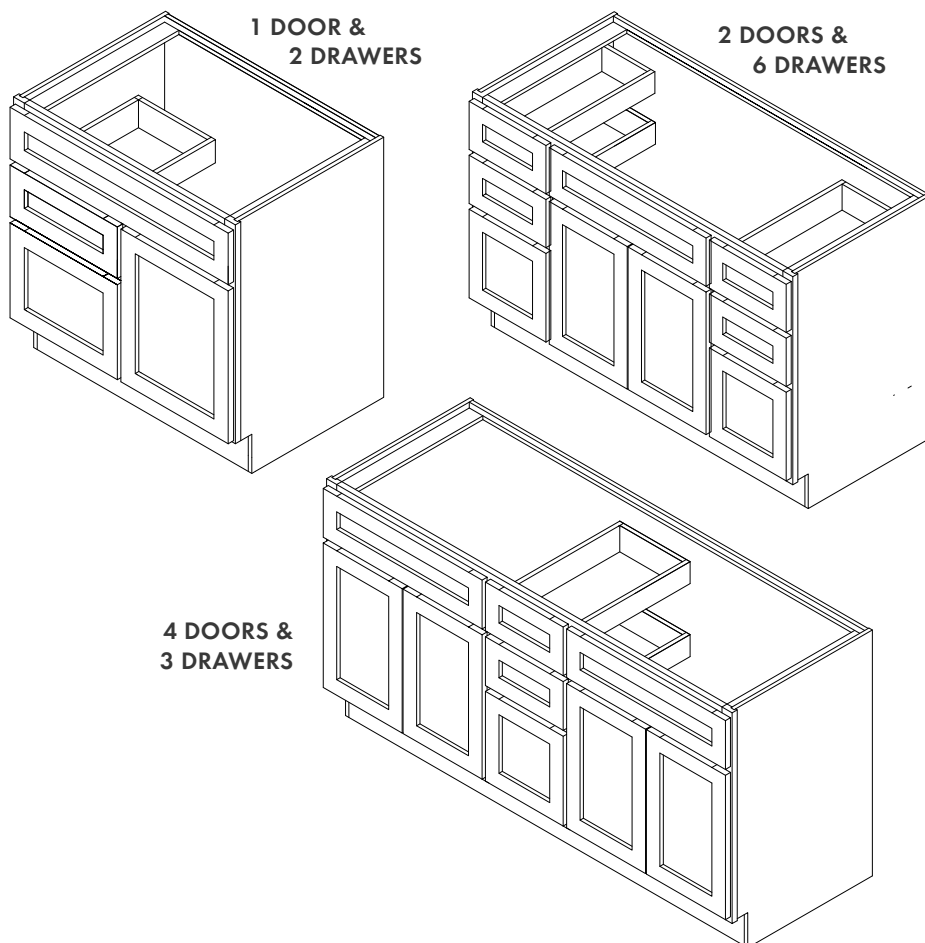


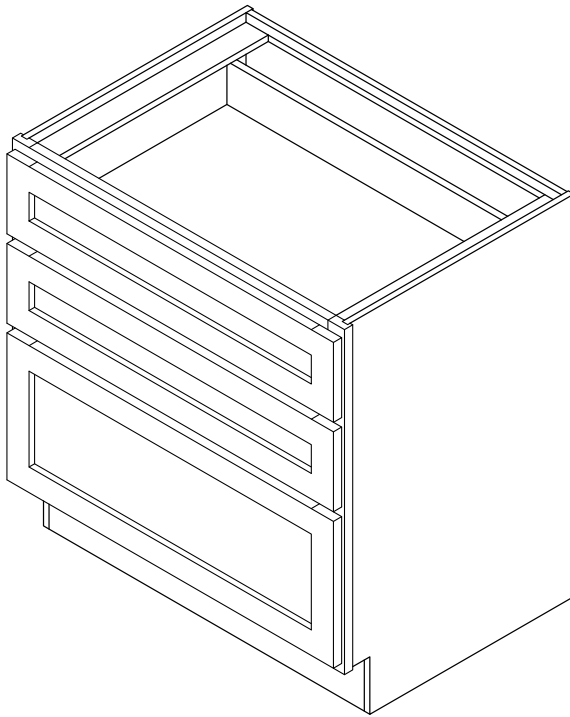
COMBO UNITS	
WIDTH	36" 42"
HEIGHT	31.5"
TOEKICK	4.5" tall 2.125" deep
CABINET DEPTH	21"
SHELVES INCLUDED	0
HINGES PER DOOR	2

NOTE: No shelves and no holes for shelves are provided.

VANITY ASSEMBLY

WIDTH	30", 36", 48", 60"
HEIGHT	31.5 (/Tall)
TOEKICK	4.5" tall 2.125" deep
CABINET DEPTH	21"
SHELVES INCLUDED	0
HINGES PER DOOR	2



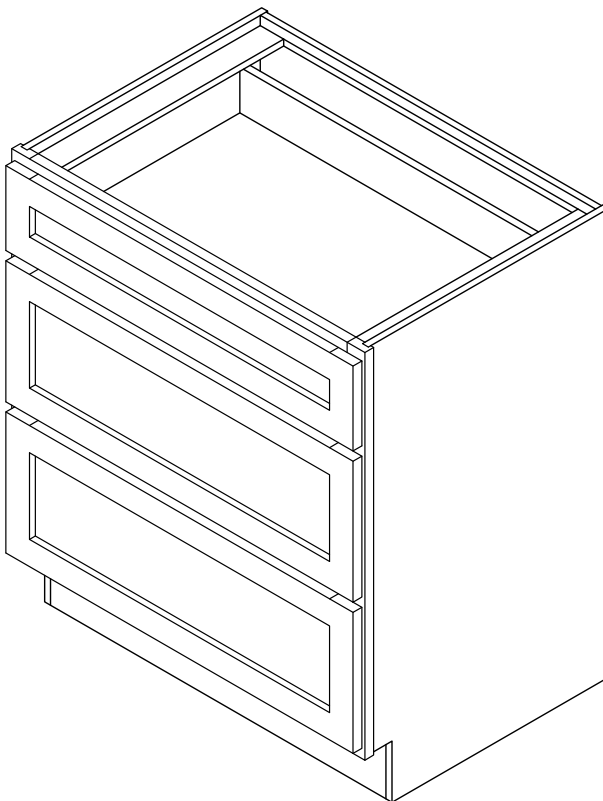


3 DRAWER VANITY BASE

WIDTH	12" - 30"
HEIGHT	31.5"
TOEKICK	4.5" tall 2.125" deep
CABINET DEPTH	21"

DETAILS: On a standard height vanity cabinet the top two drawers are of an equal more shallow depth while the bottom drawer is deeper.

NOTE: Craftsman is available in increments of 1.5" from sizes 12" - 27". Available in increments of 3" from sizes 27" - 30".



3 DRAWER VANITY BASE TALL

WIDTH	12" - 30"
HEIGHT	34.5" (/Tall)
TOEKICK	4.5" tall 2.125" deep
CABINET DEPTH	21"

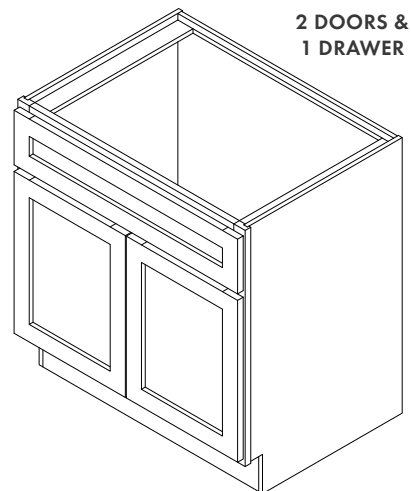
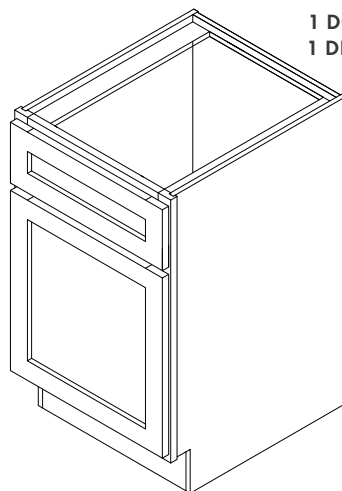
DETAILS: On a tall vanity cabinet the top drawer is shallow while the bottom two drawers are deeper and of equal size.

NOTE: Craftsman is available in increments of 1.5" from sizes 12" - 27". Available in increments of 3" from sizes 27" - 30".

CABINET SPECIFICATIONS

VANITY SINK BASE

WIDTH	18" - 36"
HEIGHT	31.5" - 34.5" (/Tall)
TOEKICK	4.5" tall 2.125" deep
CABINET DEPTH	21"
SHELVES INCLUDED	0
HINGES PER DOOR	2

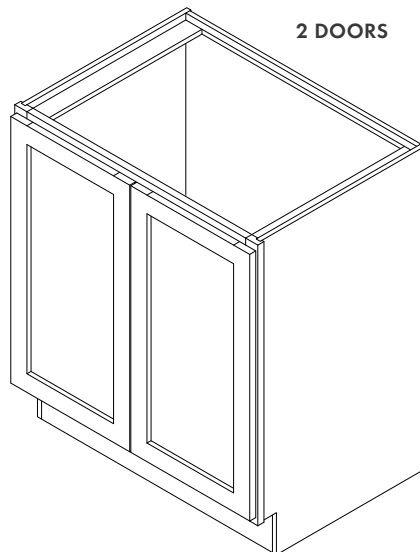
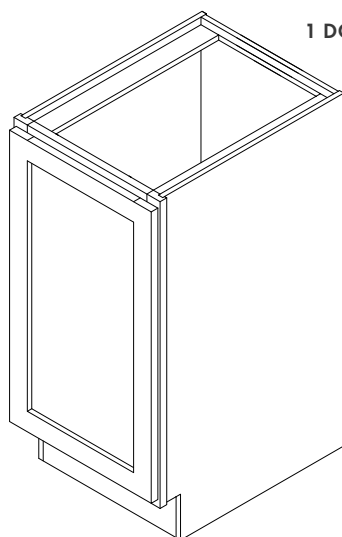


DETAILS: Craftsman is available in increments of 1.5" from sizes 18" - 27". Available in increments of 3" from sizes 27" - 36".

NOTE: No shelves and no holes for shelves are provided.

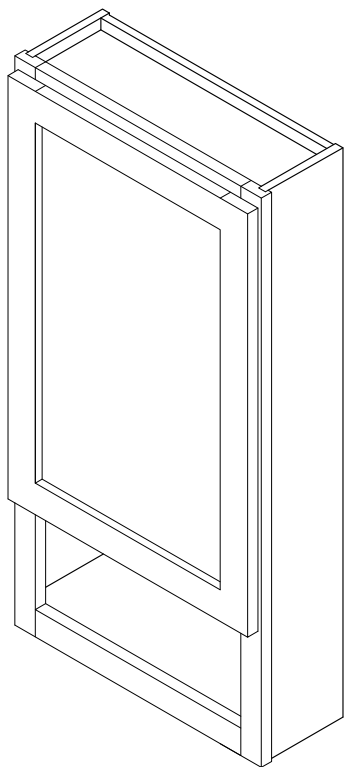
FULL HEIGHT VANITY SINK BASE

WIDTH	18" - 36"
HEIGHT	34.5" (/Tall)
TOEKICK	4.5" tall 2.125" deep
CABINET DEPTH	21"
SHELVES INCLUDED	0
HINGES PER DOOR	2



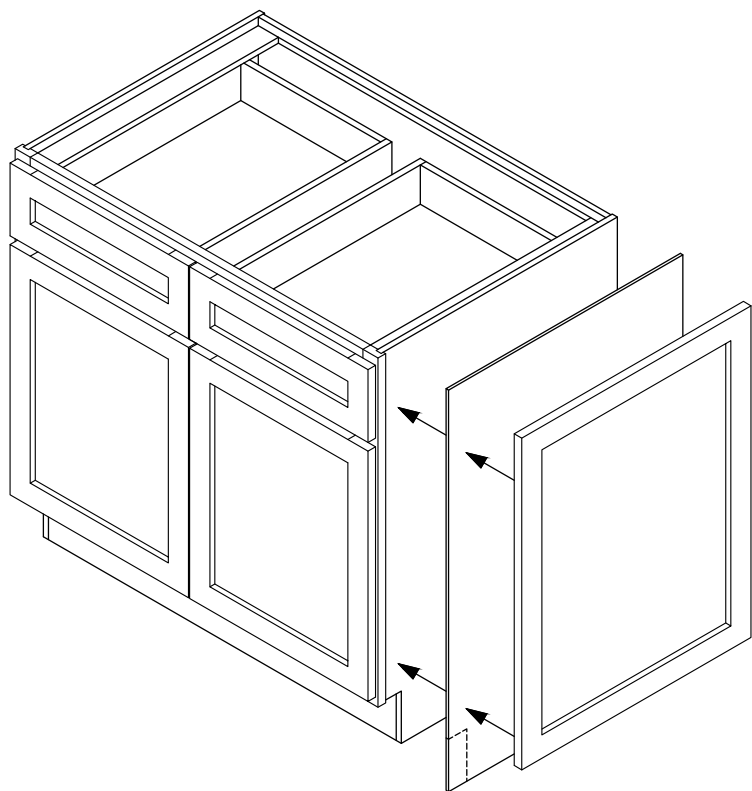
DETAILS: Craftsman is available in increments of 1.5" from sizes 12" - 27". Available in increments of 3" from sizes 27" - 39".

NOTE: No shelves and no holes for shelves are provided.



VANITY WALL CABINET	
WIDTH	18", 21"
HEIGHT	30", 36"
CABINET DEPTH	6"
SHELVES INCLUDED	2

HINGES PER DOOR	2
-----------------	---



PLANT ON DOOR		
PD1230	11.5" width	28.5" height
PD1236	11.5" width	34.5" height
PD1242	11.5" width	40.5" height
PD2430	23.5" width	28.5" height

OPTIONS: Available in custom sizes. Please send exact measurements with a price request form.

DETAILS: Plant on doors match the doorstyle of cabinets they are mounted to, giving a consistent look around corners. Plant on doors require a corresponding skin underneath.

CABINET SPECIFICATIONS

BASE SKIN

WIDTH 23.25"

HEIGHT 34.5"

WALL SKIN

WIDTH 11.25"

HEIGHT 30", 36", 42"

TALL SKIN

WIDTH 23.25"

HEIGHT 96"

TOESKIN

WIDTH 96"

HEIGHT 4.5"

SKIN4848

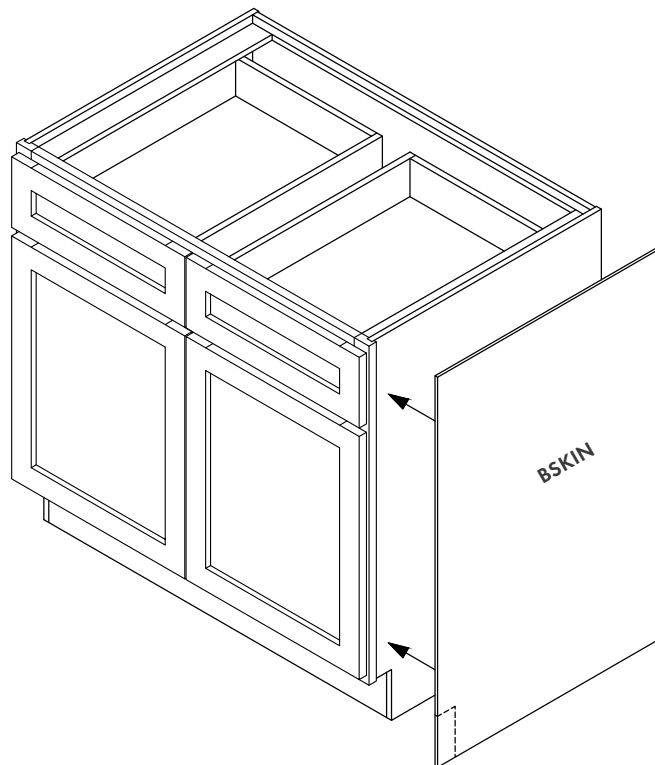
WIDTH 48"

HEIGHT 48"

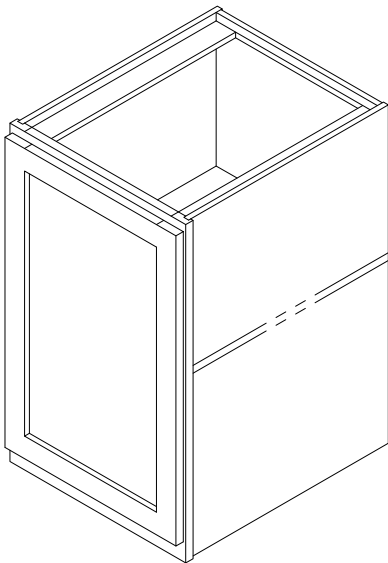
SKIN4896

WIDTH 48"

HEIGHT 96"

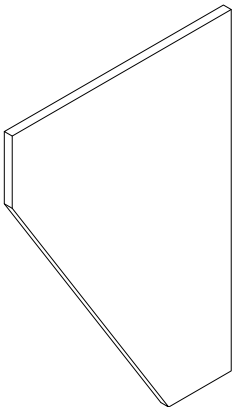


DETAILS: Skins are needed for exposed cabinet ends to complete the finished look.



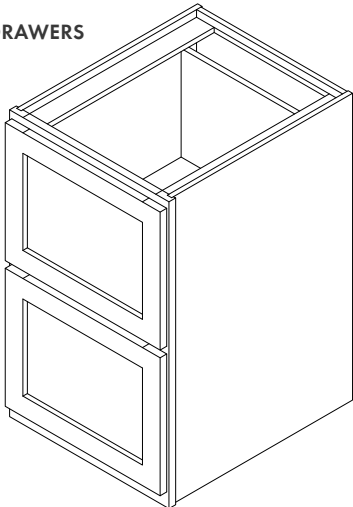
FULL HEIGHT FILE CABINET	
WIDTH	18"
HEIGHT	30"
CABINET DEPTH	21"
SHELVES INCLUDED	1
HINGES PER DOOR	2

NOTE: Does not have a filing drawer.

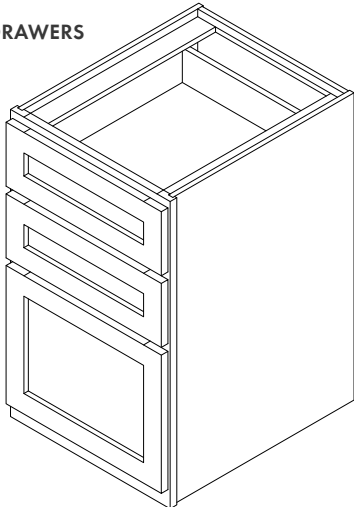


DESK END PANEL	
WIDTH	21" Top, 11.5" Bottom
HEIGHT	30"
LENGTH BEFORE ANGLE	5"

2 DRAWERS



3 DRAWERS



FILE CABINET	
WIDTH	18"
HEIGHT	30"
CABINET DEPTH	21"

DETAILS: File drawers will be routed for letter and legal size folders in file cabinets.

NOTE: Only one drawer in the 3DFC18 cabinet will accommodate files.

CABINET SPECIFICATIONS

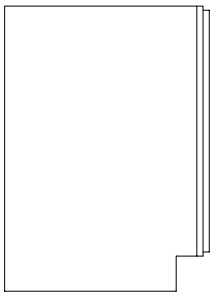
DUAL TONE CABINETS

This option gives you the ability to have the doors and drawers of a cabinet one color and the remainder of the cabinet a second color. When filling out the Order Form, the color that is selected in Order Specifications will be the frame/cabinet color. Make a note on the item line for the color of the doors/drawer faces. Make sure to add two touch up kits!

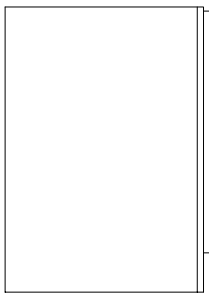


TOEKICK

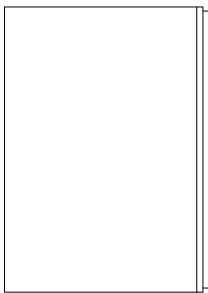
Our base cabinets come standard with a 4.5" x 2.125" toekick cut out. Modifications are available to change the style of the toekick, or remove it completely. See page 64 for details on ordering.



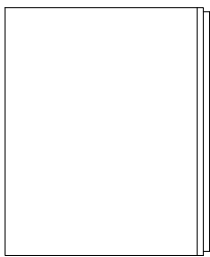
STANDARD
TOEKICK



FURNITURE
TOEKICK



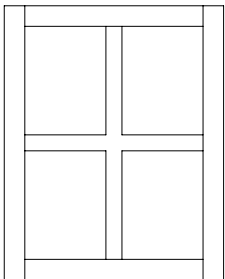
FURNITURE
BOTTOM



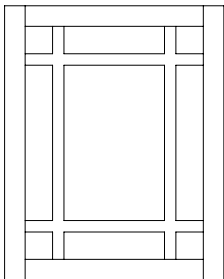
NO TOEKICK

MULLIONS

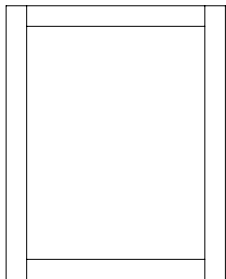
Mullions are used to divide a frame door opening and hold panes of glass. Several styles are available for Founder's Choice cabinets.



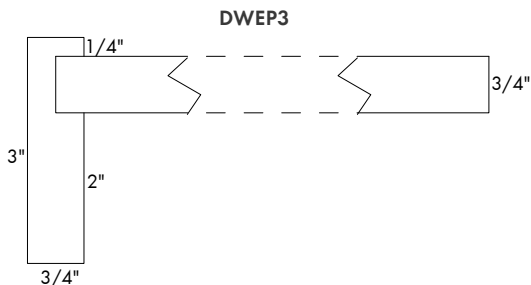
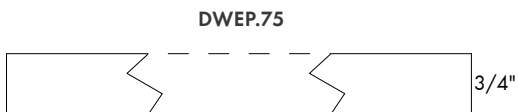
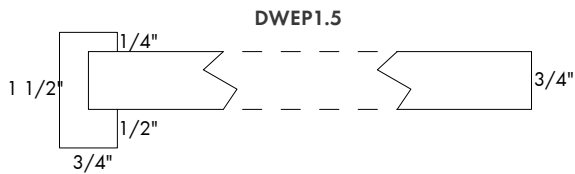
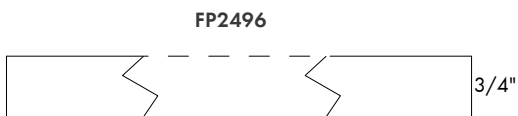
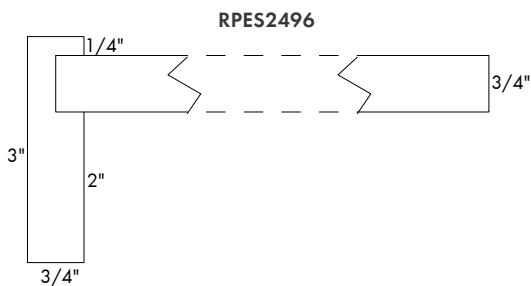
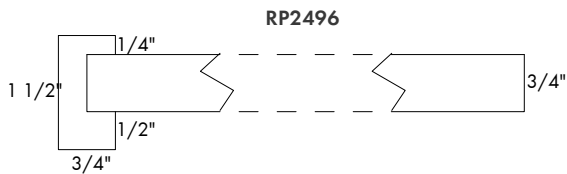
DIVIDED



FRAMED



CLEAR



REFRIGERATOR PANEL	
WIDTH	24", 30"
HEIGHT	96"

DETAILS: Finished one long edge and both sides.

FINISHED PANEL	
WIDTH	24", 30"
HEIGHT	96"

DETAILS: Finished one long edge and both sides only.

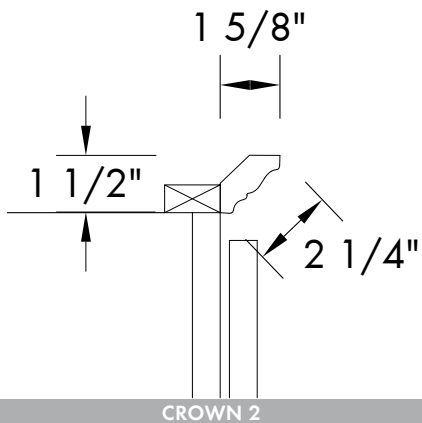
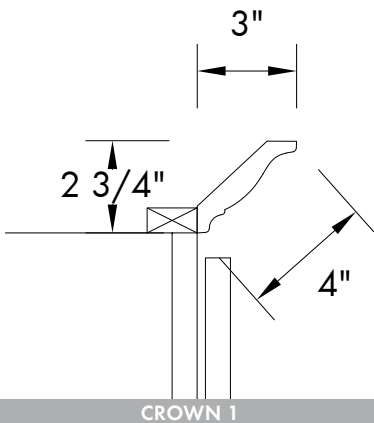
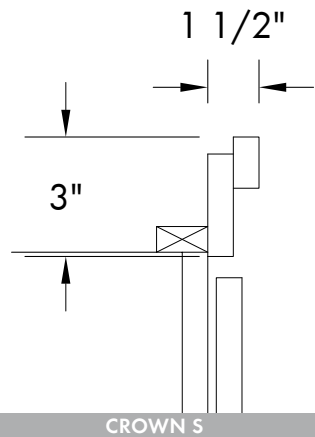
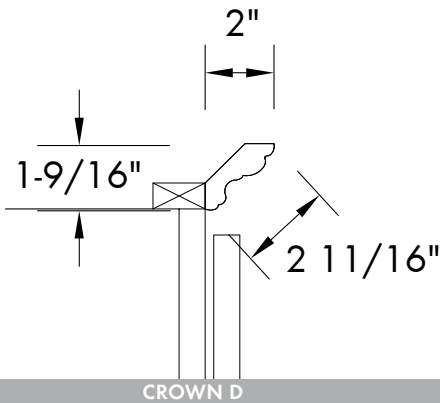
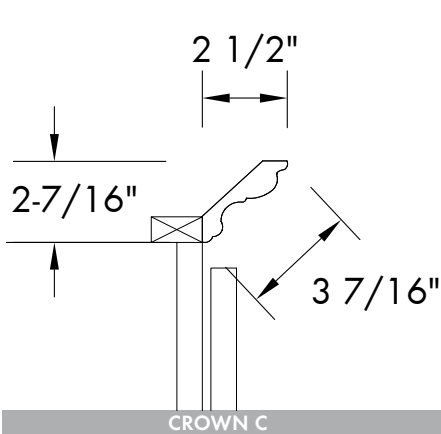
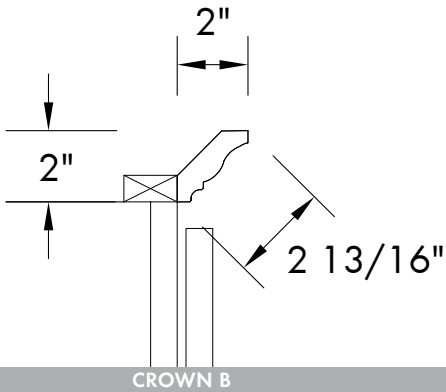
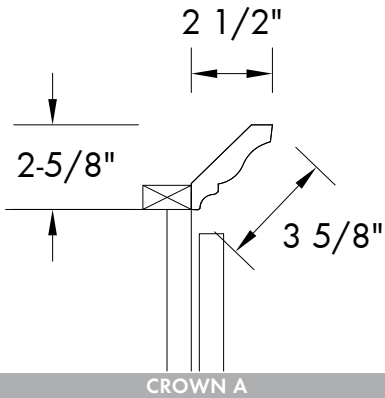
DISHWASHER END PANEL	
WIDTH	24"
HEIGHT	34.5"

DETAILS: Finished one long edge and both sides.

TRIM & MOLDING

PLEASE REFERENCE THESE SPEC DRAWINGS AND DIMENSIONS WHEN ORDERING TRIM AND MOLDINGS.

CORBEL	BATTEN	SCRIBE
QTRRND	MOC90	CTOP
SPLASH	FILLER	FLUTED FILLER



CUSTOM CABINETS

CUSTOM CABINETS

When ordering a cabinet, part, or accessory that is not listed in our Item List (reference Pages 23-30, or the Items tab of the order form) please use the below codes so that your request is handled appropriately. All of these will need a custom price request to be sent in, it will be to the customer's overall benefit to share as much information as possible with Founder's Choice. Concept sketches while not required for every custom item, are encouraged for the sake of clarity.

CUSTOM-CABINET

Non-catalog full cabinet. All require prior submission of a Custom Request form for the approved price and a concept sketch.

CUSTOM-DOOR-FRAME

Custom size frame and/or door.

CUSTOM-HOOD

Custom hood. Requires a concept sketch.

CUSTOM-PD

Custom plant on door.

CUSTOM-ROS

Custom size roll out shelving.

CUSTOM-SHELF

Custom size shelf ($\frac{3}{4}$ " ply for cabinet interior).

CUSTOM-TRIM

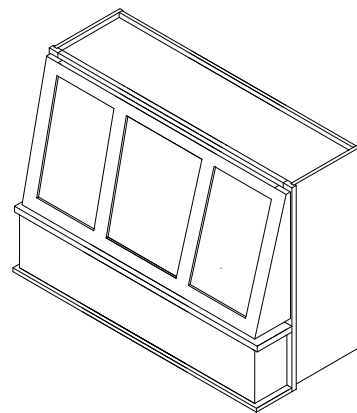
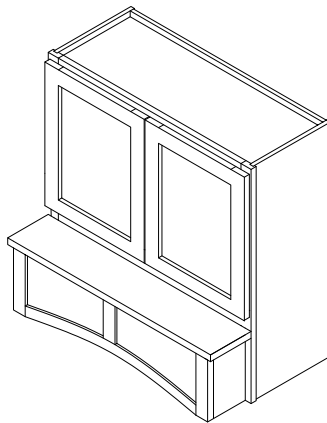
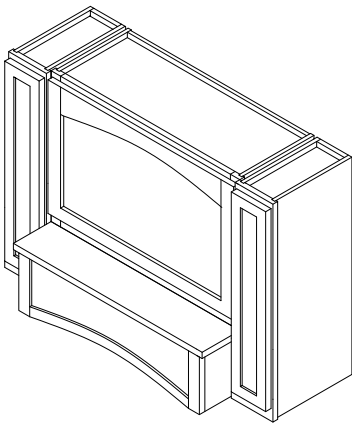
Custom size trim. Requires a concept sketch.

CUSTOM-FLOATING SHELF

Floating custom shelf.

CUSTOM HOODS

We can design a hood to fit the style of your design. The coordination of a hood liner and blower is very important, please email Orders@FoundersChoice.com for more information about our standard blower options. We can also create a custom design for a liner and blower that you specify – if you choose this option we will need the custom unit on site in order to finish fabricating the hood for a perfect fit.



EXTRA SHELVES

If an extra shelf is needed for any cabinet, please use this format for the item code:

(Cabinet type) (Cabinet Width in Inches) - SHELF

(Ex: B30-SHELF, VB27-SHELF, W36-SHELF)

PLEASE NOTE: Wall Shelf is 10" deep, Base shelf is 22" deep.

DEPTH MODIFICATIONS Specify total depth in 1/4" Increments.

DECREASE DEPTH

- Wall - 6" min
- Base - 12" min (Drawers must be modified)
- Tall - 12" min

INCREASE DEPTH

- Wall - 24" max
- Base - 29" max (Drawers must be modified)
- Tall - 29" max

MODIFY FOR COOKTOP (NO CHARGE)

This notation will fix the top drawer of the corresponding cabinet in place. Allowing you to use a standard base, or drawer bank as a cooktop cabinet. Please note that sink bases used in this way will not include shelves.

- It is not Founder's Choice responsibility to know if tip out trays will work with your cook top (The trays protrude past the face frame into the cabinet 1 1/2").
- For cooktops with a Downdraft vent, we recommended a cabinet depth modification of at least 24". You will need to note this appropriately.
- It is possible to maintain a top drawer with a cooktop, however it will need to be custom fit on-site.

EXTENDED STILE

Applicable to any cabinet in the Craftsman Series. 1" increments.

- Specify the increase in stile size.
- A 1" extended stile will increase the width of the cabinet by 1"

TOEKICK

The toekick of the cabinet may be modified in any way. Use the code MOD-TOE and describe your intentions using the terms listed in the Glossary.

FINISHED INTERIOR

This option provides a color or species matched interior. For 'color matched interior' orders, the species will be White Birch.

CUT FOR GLASS

CUT FOR GLASS Depending on location of the jobsite, it may be advantageous to source glass panels locally. Glass panels are available through FC in a variety of patterns, please call for more detailed info. Please note that glass panels will not be installed, due to safe shipping considerations.

MULLIONS Mullions will mimic the inside profile of the door. Mullions will be inserted evenly (approximately one per foot of opening).